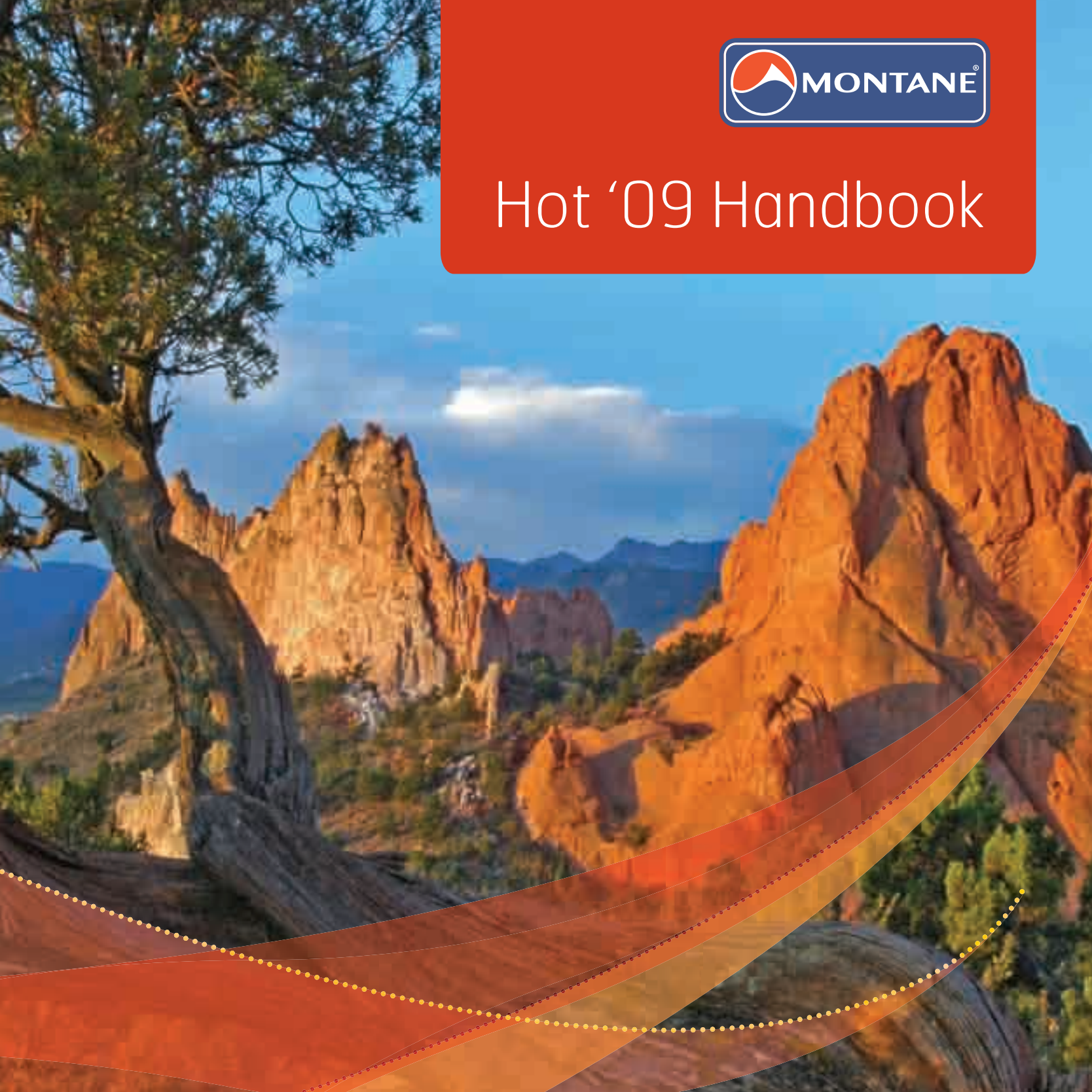




Hot '09 Handbook



MONTANE® Philosophy

MONTANE® is a company owned and run by people with a passion for outdoor performance sports which challenge and inspire.



MONTANE® clothing has become the first choice in clothing for a huge number of adventure racing teams, polar explorers, mountain rescue volunteers, ultra-distance athletes, outdoor professionals, and active amateur sportspeople the world over since our humble beginnings in 1993.

You can go further, faster, longer, when you build a clothing system using MONTANE®.

Lightweight...

By reducing the weight and pack size of all MONTANE® clothing to the lowest achievable levels, the outdoor experience is enhanced. Less energy is wasted carrying your clothing and more space is available for other essential items like food or equipment.

...and Breathable

In all active-use outdoor situations the essential requirement of comfortable clothing is to prevent the weather entering your clothing system and at the same time allow your sweat and excess body heat to easily escape.

Environmental issues...

Every day we all become more and more aware of the environmental threats facing the outdoor environments we love so much. We know that our industry, which demands both mineral and energy resources, is contributing to environmental pollution, and we are determined to minimise or indeed reverse our impact over time.

We know we cannot solve the global problems single handed, but we can play our own part, and encourage awareness and action from our suppliers and customers alike.

We have always advocated lighter weight, simpler garments, which are intrinsically less resource intensive than other clothing. We have only ever supported and encouraged sports which in themselves do not pollute, and in so doing we have encouraged greater environmental awareness and appreciation. We were one of the first companies to stop producing a paper consumer catalogue, requiring instead our customers to refer to the low-impact on-line catalogue.

But, notwithstanding all this, as our understanding of the factors influencing climate change grows we realise this is not enough.

Hot 09...

For the spring 09 product range, we are going one step further by introducing a specific Live Lite sub-range which uses fabrics comprising a minimum of 90% recycled yarns and which are **completely recyclable**. We are also switching all relevant products to PRIMALOFT® ECO, recycled insulation material. We already use recycled Polartec in some garments, and are committed to switch to more and more recycled fabrics as they become available.

... and beyond

We will be contributing revenue from the sale of all Live Lite products to the World Land Trust (www.worldlandtrust.org); we are actively engaged in reducing all waste and pollution from our UK and shipping operations; we carbon-offset all our business travel; and we aim to be **completely carbon neutral as a business in the UK for 2009**.



Contents

Mountain Adventure

		Page
Terra Trail Shorts	♂	5
Terra Shorts	♂	5
Terra Lite Pants	♂	6
Terra Pants	♂	7
Terra Converts	♂	8
Balance Shirt	♂	9
Oryx Jacket	♂	9
Pulse Shirt	♂	10
Jaguar Jacket	♂	10
Prism 2.0 Jacket	♂	12
Flux Jacket	♂	12
Extreme Smock	♂	13
Extreme Jacket	♂	13
Terra Equilibrium Pants	♂	15
Dynamo Jacket	♂	16
Scarab Jacket	♂	16
Puma 2.0 Jacket	♂	17
Sabretooth Jacket	♂	17
Super-Fly XT Jacket	♂	18
eVent® Halo Stretch Jacket	♂	18
Super-Fly Jacket	♂	19
Spectra Pants	♂	20
Venture Jacket	♂	21
Venture Pants	♂	21
Atomic DT Jacket	♂	23
Atomic DT Pants	♂	23

Fast & Lite

Lite-Speed H2O Jacket	♂	25
Lite-Speed Jacket	♂	25
Slipstream Jacket	♂	26
Featherlite Marathon Jacket	♂	26
Featherlite Smock	♂	27
Featherlite Pants	♂	27
Trail Tights	♂	29
Sonic Shorts	♂	29
Aero Cap	♂ ♀	31
Dragonfly Shirt	♂	31
Terra T-shirt	♂	32
Bionic T-shirt	♂	32
Stormrider Jacket	♂	34
Velocity DT Jacket	♂	34
Featherlite Vélo H2O Jacket	♂	35
Sportwool® Torque Jersey	♂	36
Cadence Jersey	♂	36
Featherlite Vélo Jacket	♂	37
Pursuit Ergo Shorts	♂	37

Live Lite

Horizon Jacket	♂	40
Filament Jacket	♂	40
Bag Pants	♂	42
Infinity T-shirt	♂	42

Women's Mountain Adventure

Terra Stretch Shorts	♀	45
Terra Stretch Pants	♀	45
Terra Pants	♀	46
Dynamo Jacket	♀	47
Gazelle Jacket	♀	48
Liberty Jacket	♀	48
Panther Jacket	♀	50
Firefox Jacket	♀	50
Extreme Smock	♀	51
Super-Fly Jacket	♀	52
Venture Jacket	♀	53
Venture Pants	♀	53
Quattro DT Jacket	♀	54

Women's Fast & Lite

Lite-Speed H2O Jacket	♀	56
Lite-Speed Jacket	♀	56
Featherlite Marathon Jacket	♀	57
Featherlite Pants	♀	57
Trail Tights	♀	58
Mayfly Shirt	♀	59
Bionic T-shirt	♀	59
Bionic Tank	♀	60
Featherlite Vélo Jacket	♀	60

Women's Live Lite

Future Jacket	♀	64
Element Jacket	♀	64
Bottle Pants	♀	66
Perpetual T-shirt	♀	66

MONTANE® Information

Product Comparison Chart	67
Fabric Summaries	68-73
Size Chart	74
Care, Maintenance & Warranty	74
International Distributors	75-76
Range Summaries	77-80
Prices	Inside Back Cover

For each product we have produced a simple and approximate scale to help you determine which of our products performs the appropriate trade-off between weight and durability; waterproofness and breathability. A summary of this is provided on page 67.

We make every effort to ensure the accuracy of this workbook; however we do pursue a policy of continuous and immediate improvement and reserve the right to change product specifications without prior notice.

We also advise that the colours be used only as a guide; due to the nature of the printing process we cannot guarantee to match colours exactly.

Please contact MONTANE® should you require further information or advice on product selection.





Mountain Adventure products are designed for year round use in mountainous and upland terrain.

Whether backpacking, trekking, climbing or scrambling these garments provide insulation, weather protection and durability in a low weight package.



Terra Trail Shorts



Breathability Water-resistance Durability Weight

PRODUCT SUMMARY

Lightweight technical MTB and Trekking shorts with stretch.

APPROXIMATE WEIGHT

265g / 9oz : MEDIUM

Terra Trail Shorts are lightweight, hard-wearing, weather-resistant and highly breathable shorts, which are ideal for multi-activity use in mild conditions. Cotton-feel TACTEL® is durable, weather-resistant and fast drying, TACTEL® Dynamic incorporates LYCRA® for good freedom of movement. Combined with the simple and effective design features for active users, the Terra Trail Shorts are equally effective as a lightweight trekking short or MTB overshoot.

DETAILS

- Active cut with stretch lumbar and stretch high lift crotch
- Part elasticated waist with button / two-way zipped fly closure and webbing belt with low profile buckle
- Two mesh lined front pockets
- Two zipped thigh vents / pockets
- Double layer seat
- UPF 40+ protection

FABRIC



Main Body:
Cotton-feel TACTEL®



Stretch:
TACTEL® Dynamic

COLOURS

Black / black
Steel / black



Terra Shorts



Breathability Water-resistance Durability Weight

PRODUCT SUMMARY

Lightweight technical trekking and scrambling shorts.

APPROXIMATE WEIGHT

240g / 9oz : MEDIUM

Terra Shorts are lightweight, hard-wearing, weather-resistant and highly breathable shorts, which are ideal for active use in warmer conditions. The TACTEL® fabric provides a cotton-like feel which doesn't rustle combined with the durability and fast drying properties of nylon. The tight weave and TEFLON® surface finish help water bead-up and run off the wind-resistant fabric face. The low weight, low pack size and technical features of Terra Shorts make them the ideal choice for any serious adventure traveller in sustained warm conditions.

DETAILS

- Active cut with high lift crotch
- Part elasticated waist with button / zipped fly closure and webbing belt with low profile buckle
- Mesh lined front pockets
- Double layer seat and hips
- Two zipped side security vent pockets
- UPF 40+ protection

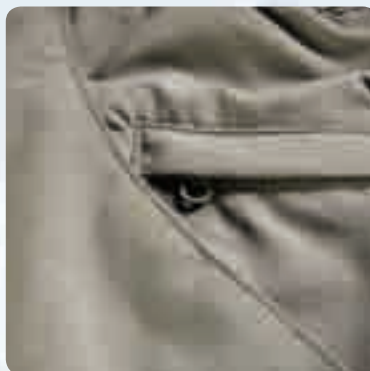
FABRIC



Main Body:
Cotton-feel TACTEL®

COLOURS

Graphite
Black
Navy
Ivy



Terra Lite Pants



Breathability  Water-resistance  Durability  Weight 

PRODUCT SUMMARY

Lightweight trek and travel pants.

APPROXIMATE WEIGHT

310g / 11oz: MEDIUM

Terra Lite Pants are very lightweight technical fabric pants that perform as well trekking on the mountains and moors as they do travelling through the tropics. The Cotton-feel TACTEL® fabric is not only water and wind-resistant, but also lightweight, fast drying and highly breathable. The discreet technical features such as thigh vents, articulated knees and zipped hip pocket make Terra Lite the best choice for prolonged adventure travel and trekking trips where you only want to carry one pant.

DETAILS

- Active cut with high lift crotch
- Part elasticated waist with button / zipped fly closure and webbing belt with low profile buckle
- One zipped hip pocket
- Two mesh lined front pockets
- Mesh lined thigh vents
- Articulated knee
- Press stud adjustable ankles
- UPF 40+ protection

FABRIC



COLOURS

Steel
Black
Navy

Main Body:
Cotton-feel TACTEL®



Terra Pants



Breathability ■■■■■■ Water-resistance ■■■■■■ Durability ■■■■■■ Weight ■■■■■■

PRODUCT SUMMARY

Lightweight, highly technical, trekking and scrambling pants.

APPROXIMATE WEIGHT

320g / 11oz: MEDIUM

Terra Pants are lightweight, hard-wearing, weather resistant and highly breathable trousers, suitable for a wide range of outdoor sports. The TACTEL® nylon outer provides a cotton-like feel, which doesn't rustle, combined with the durability and fast drying qualities of nylon. The tight weave of TACTEL® together with a TEFLON® surface finish helps water to bead up and run off the fabric face. Terra's low weight, small pack size, fast drying properties and extremely durable reinforcements make them the ideal choice for any serious adventure traveller or mountaineer.

DETAILS

- Active cut with high lift crotch
- Part elasticated waist with button / zipped fly closure and webbing belt with low profile buckle
- Two zipped mesh lined front pockets
- Zipped pull out security pocket
- Mesh lined thigh vents
- Reinforced seat, knee and inner ankle
- Pre-bent knee
- Ankle zips and press stud adjustable ankles
- Black / black available in short leg length
- UPF 40+ protection

FABRIC



Main Body:
Cotton-feel TACTEL®

CORDURA®

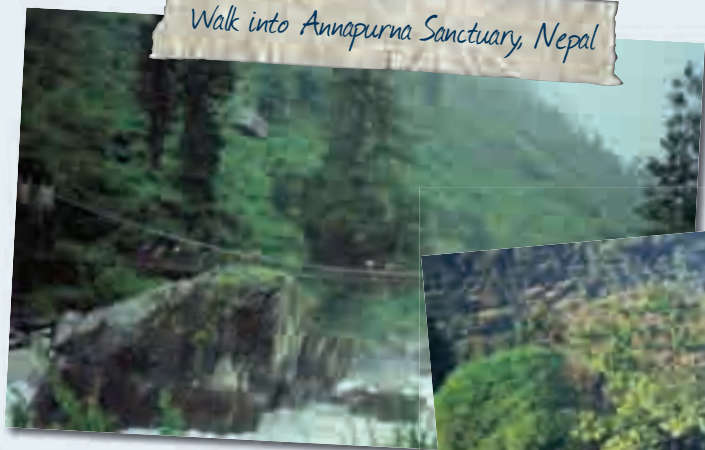
Reinforcements:
CORDURA® Mini-Rip

COLOURS

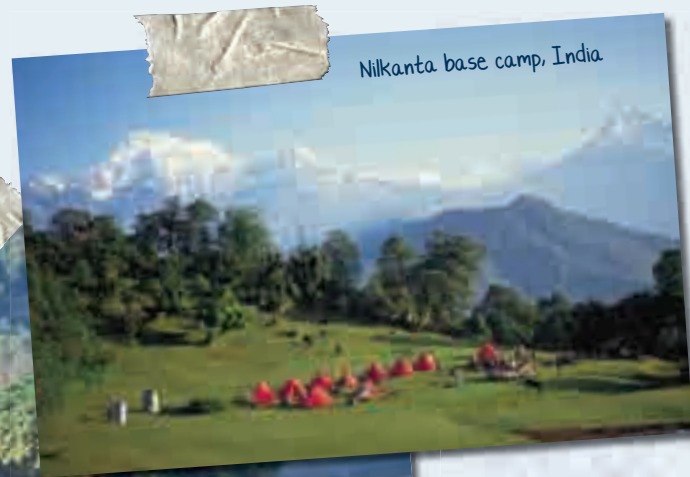
Ivy / black
Ink / ink
Graphite / black
Black / black



Walk into Annapurna Sanctuary, Nepal



Nilkanta base camp, India



Crossing to the Fishtail Lodge, Pokora, Nepal



All © Paul Ramsden

Terra Converts



Breathability ■■■■■■■■■■ Water-resistance ■■■■■■■■■■ Durability ■■■■■■■■■■ Weight ■■■■■■■■■■

PRODUCT SUMMARY

Lightweight highly technical trekking and scrambling trousers and shorts combined.

APPROXIMATE WEIGHT

335g / 12oz: MEDIUM

Terra Converts are lightweight, hard-wearing, weather resistant and highly breathable trousers, which zip-off just above the knee into a mid-length short, making them extremely suitable to a wide range of outdoor and travel activities where low bulk and versatility are essential. The TACTEL® nylon outer provides a cotton-like feel which doesn't rustle, combined with the durability and fast drying qualities of nylon. The tight weave of TACTEL® together with a TEFLON® surface finish helps water to bead up and run off the fabric face, whilst being highly wind-resistant. Tonally-coloured CORDURA® mini-rip wear patches offer heightened durability only where it's needed. The low weight, low pack size and inherent versatility of Terra Converts make them an ideal choice for the adventure traveller wanting just one pant for all conditions in both urban and natural landscapes.

DETAILS

- Concealed zip-off legs just above the knee
- Active cut with high lift crotch
- Part elasticated waist with button / zipped fly closure and webbing belt with low profile buckle
- Zipped pull out security pocket
- Two zipped mesh lined front pockets
- Reinforced, self-coloured seat, knee and inner ankles
- Articulated knee
- Ankle zips and press stud adjustable ankles
- UPF 40+ protection

COLOURS

Graphite / graphite
Ink / Ink
Black / black

FABRIC



Main Body:
Cotton-feel TACTEL®

CORDURA

Reinforcements:
CORDURA® Mini-Rip



*What are the chances, best day of the year
so far for Sharp Edge*



*Montane Mountain Activity
Day, April 2008.
A chance for retailers to try
out new products*

Blencathra, Lake District



Balance Shirt



Breathability ■■■■■■■■■■ Water-resistance ■■■■■■■■■■ Durability ■■■■■■■■■■ Weight ■■■■■■■■■■

PRODUCT SUMMARY

Ultra-lightweight, reversible POLARTEC® Microfleece shirt.

APPROXIMATE WEIGHT

230g / 8oz: MEDIUM

The Balance Shirt is a truly brilliant and simple piece of ultra-lightweight, versatile outdoor clothing. Making full use of the POLARTEC® Velour Grid / Jersey microfleece, the Balance is warmer when worn with the grid on the inside and higher wicking when worn with the grid on the outside. It's therefore the ideal lightweight fleece mid-layer for changeable conditions or long days where your needs may switch between moisture management and insulation.

DETAILS

- Reversible
- Flatlocked seams
- Neck zip with double head slider
- LYCRA® bound hem and cuffs

FABRIC



POLARTEC® Classic Micro® Grid / Jersey

COLOURS

Ink
Alpine red
Chestnut
Black



Oryx Jacket



Breathability ■■■■■■■■■■ Water-resistance ■■■■■■■■■■ Durability ■■■■■■■■■■ Weight ■■■■■■■■■■

PRODUCT SUMMARY

Ultra-lightweight, high wicking, POLARTEC® fleece jacket.

APPROXIMATE WEIGHT

250g / 9oz: MEDIUM

Using POLARTEC® Power Dry®, the Oryx Jacket has the twin performance properties of being both very high wicking for active use in the spring and summer; and also highly thermally efficient for the colder autumn and winter months. With DRYACTIV® Express fabric for extra high wicking stretch performance under the arms, the Oryx is incredibly comfortable for all-day, all-season use.

DETAILS

- Bi-fabric, zoned construction
- Front zip with semi-automatic locking puller
- Small zipped chest security pocket with MP3 player access
- Underarm Enhanced Breathing Panels (E.B.P.) with high wicking performance

FABRIC



Main body: POLARTEC® Power Dry®
Stretch: DRYACTIV® Express

COLOURS

Black
Paprika



Pulse Shirt



Breathability Water-resistance Durability Weight

PRODUCT SUMMARY

Lightweight partially recycled POLARTEC® Classic fleece shirt.

APPROXIMATE WEIGHT

300g / 11oz: MEDIUM

The Pulse is a lightweight POLARTEC® shirt which either acts as a highly breathable, light insulation layer for use with any MONTANE® layering system, or a comfortable, technical, outdoor sport pullover in its own right. Using POLARTEC® Classic 100 RECYCLED fleece in the torso for warmth and POLARTEC® Classic Micro in the sleeves and underarm to minimise bulk and maximise comfort this is an innovative garment in a dependable and functional fabric which will never be left at home.

DETAILS

- Bi-fabric, zoned construction
- Generous self coloured front neck zip / vent
- Concealed zipped chest pocket
- Single hand adjustable elasticated draw-cord hem
- DWR Beardguard lined collar

FABRIC

 **CLASSIC 100**
Main Body:
POLARTEC® Classic 100
100% Recycled

 **CLASSIC MICRO**
Side Panels / sleeves:
POLARTEC® Classic Micro

COLOURS

Black / graphite
Ink / graphite



Jaguar Jacket



Breathability Water-resistance Durability Weight

PRODUCT SUMMARY

Lightweight, high loft, POLARTEC® fleece jacket.

APPROXIMATE WEIGHT

620g / 22oz: MEDIUM

Using POLARTEC® Wind Pro®, the Jaguar Jacket has an exceptionally high warmth to weight ratio for a fleece. However, the real benefit of this fabric is on the inside – the long brushed fibres not only trap enormous amounts of air and are naturally very high wicking, but they also feel soft and comfortable against the skin. POLARTEC® Thermal Pro® stretch panels enhance freedom of movement exactly where it's needed. Being warm, comfortable, wicking and wind-resistant, the Jaguar is the ideal all round cool conditions fleece.

DETAILS

- Bi-fabric, zoned construction
- Two-way reversed front zip
- Two zipped, map sized, mesh-lined hand-warmer pockets
- Underarm stretch panels
- Single hand adjustable elasticated hem and collar draw-cords

FABRIC

 **WIND PRO®**
Main body:
POLARTEC® Wind Pro®

 **THERMAL PRO®**
Stretch:
POLARTEC® Thermal Pro® Jersey

COLOURS

Moroccan blue / graphite
Black / black
Silver / black



FANTASTIC PLASTIC



PrimaLoft ECO fibres are produced from post-consumer products (plastic bottles) and post industrial plastic waste. The use of such products reduces the amount of oil needed to be refined and the subsequent harmful emissions which contribute to acid rain, global warming and smog. PrimaLoft ECO has a minimum 50% recycled content.



We're inside, so you don't have to be.

©2008 PrimaLoft® is a registered trademark of Albany International Corp. 2008

ALBANY
INTERNATIONAL

Prism 2.0 Jacket



Breathability ■■■■■■■■■■ Water-resistance ■■■■■■■■■■ Durability ■■■■■■■■■■ Weight ■■■■■■■■■■

PRODUCT SUMMARY

Ultra-lightweight insulated hooded jacket.

APPROXIMATE WEIGHT

420g / 14oz : MEDIUM

The Prism 2.0 is the lightest insulation jacket in the MONTANE® range, now using the ultra-lightweight 40g/m² PRIMALOFT® ECO insulation, it is one the lightest such jackets in the world. The combination of windproof shell fabric and moderate insulation produces a wind and water resistant, low bulk but surprisingly warm-for-its-weight jacket. Featuring an advanced hood adjustment system, double insulated pockets and being packable into one of the chest pockets, the Prism 2.0 can be comfortably worn when active in colder conditions or stored in your pack and forgotten about until really needed.

DETAILS

- Insulated hood with volume adjuster and single hand operated non-whip face aperture draw-cords
- Baffled, reversed front zip with semi-automatic locking puller
- Two double insulated chest pockets
- Single hand adjustable elasticated draw-cord hem
- DWR beardguard chin guard
- 3M Scotchlite™ reflective flashes
- Self fabric elasticated cuffs

FABRIC



PERTEX®
Microlight Rip-stop



Filling:
PRIMALOFT® ECO
40g



Lining:
PEAQ® 60W

COLOURS

Red / silver (lining)
Steel / burnt orange (lining)
Moroccan blue / burnt orange (lining)



Flux Jacket



Breathability ■■■■■■■■■■ Water-resistance ■■■■■■■■■■ Durability ■■■■■■■■■■ Weight ■■■■■■■■■■

PRODUCT SUMMARY

Ultra-lightweight, windproof, PRIMALOFT® ECO insulated jacket.

APPROXIMATE WEIGHT

520g / 18oz: MEDIUM

The Flux Jacket is lighter, warmer, more windproof and water-resistant, faster drying and more packable than the equivalent heavyweight fleece jacket. Featuring a full specification hood, four pockets and using 60g PRIMALOFT® ECO in areas where maximum insulation is required and 25g PRISM® for improved packability, the Flux is an intelligent synthetic insulated jacket. Being extremely breathable, lightweight, low bulk and retaining good thermal performance even when wet, the Flux is versatile, easy care insulation for year round use.

DETAILS

- Dual density zoned insulation with internal baffle anchors
- Full length, reversed and baffled two-way front zip
- Two zipped chest pockets
- Two zipped, insulated hand-warmer pockets positioned clear of waist-belt or harness
- Roll-down helmet hood, with wired peak, volume adjuster and single hand operated non-whip face aperture draw-cords
- DWR Beardguard chin guard
- Part elasticated, hook and loop adjustable cuffs
- 3M Scotchlite™ reflective flashes
- Stuffs into hand-warmer pocket

FABRIC



Outer:
PEAQ® Micro



Lining:
PEAQ® Micro



Interlining 1:
PRIMALOFT® ECO 60g



Interlining 2:
PRISM® 25g

COLOURS

Black
Chilli red
Moroccan blue



Extreme Smock



Breathability ■■■■■■■■■■ Water-resistance ■■■■■■■■■■ Durability ■■■■■■■■■■ Weight ■■■■■■■■■■

PRODUCT SUMMARY

The definitive single layer, soft-shell, high specification, lightweight mountain top.

APPROXIMATE WEIGHT

860g / 30oz: MEDIUM

The Extreme Smock is a base-layer, mid-layer and outer-layer combined. For optimum lightweight comfort and performance it should be worn against the skin or over a fast wicking technical layer such as the Bionic or Dragonfly. This is a clothing system for the really active user who wants to minimise the stop/start routine associated with adjusting a traditional layered clothing system. Through sophisticated venting and construction details, the Extreme Smock offers comfortable use across a much wider range of temperatures than competitive products of this type. It is ideally suited to all high activity outdoor sports in sustained and extreme cold conditions.

DETAILS

- Active cut with drop tail
- Large pouch pocket with accessory attachment ring
- DWR Beardguard lined collar
- Part elasticated self fabric cuffs with hook and loop adjustment
- Reinforced elbows
- Glove attachment loops on forearms
- Generous neck zip with hook and loop storm baffle
- MONTANE® cross-vent system
- Two-way zipped side vents with storm baffle
- Hook and loop adjustable hem
- Removable crotch strap
- Removable, fully specified, single hand adjustable, pile-lined hood with wired peak

FABRIC



Outer:
PERTEX® 6



Reinforcement:
POLARDRI® Mini-Rip



Lining:
DRYACTIV® 3000

COLOURS

Black (with self coloured logo)
Olive (with self coloured logo)
Red



Extreme Jacket



Breathability ■■■■■■■■■■ Water-resistance ■■■■■■■■■■ Durability ■■■■■■■■■■ Weight ■■■■■■■■■■

PRODUCT SUMMARY

The definitive single layer, soft-shell, high specification, lightweight mountain jacket.

APPROXIMATE WEIGHT

820g / 29oz: MEDIUM

The Extreme Jacket is a base-layer, mid-layer and outer-layer combined. For optimum lightweight comfort and performance it should be worn against the skin or over a fast wicking technical layer such as the Bionic or Dragonfly. This is a clothing system for the really active user who wants to minimise the stop/start routine associated with adjusting a traditional layered clothing system. Through multiple venting options the Extreme Jacket offers comfortable use across a wide range of winter temperatures.

DETAILS

- Active cut with drop tail
- DWR Beardguard lined collar
- Two zipped hand-warmer pockets
- Part elasticated self fabric cuffs with hook and loop adjustment
- Reinforced elbows
- Glove attachment loops on forearms
- Two-way front zip with hook and loop storm baffle
- MONTANE® Cross-Vent System
- Single hand adjustable elasticated draw-cord waist and hem
- Removable, fully specified, single hand adjustable, pile-lined hood with wired peak

FABRIC



Outer:
PERTEX® 6



Reinforcement:
POLARDRI® Mini-Rip



Lining:
DRYACTIV® 3000

COLOURS

Black (with self coloured logo)
Olive (with self coloured logo)
Red



Left to right, sitting: Sam Evans, Michael Burns, Fabian Baker, Matt Walker.
Standing: James Banyard, Tristan Parry, Michael Featherstone.
On board Caledonian MacBrayne ferry North West Scotland.



En route to field studies, Isle of Rum,
Inner Hebrides, Scotland



Can almost see it



Preparing for the climb ahead



© Keith Partridge

Thanks to 2nd year Geology class, Camborne School of Mines, Cornwall

Terra Equilibrium Pants



Breathability ■■■■■■■■■■ Water-resistance ■■■■■■■■■■ Durability ■■■■■■■■■■ Weight ■■■■■■■■■■

PRODUCT SUMMARY

Lightweight technical trekking pants with stretch.

APPROXIMATE WEIGHT

480g / 17oz: MEDIUM

Terra Equilibrium Pants are at the pinnacle of outdoor trouser technology. Featuring zoned PERTEX® Equilibrium fabrics for stretch where you need it and wind resistance where you don't; plus CORDURA® overlays for durability these are certainly a trouser for the technical outdoor user. The tried and tested Terra features such as a thigh ventilation, press stud adjustable ankles and an active cut with knee articulation complete the package, making Terra Equilibrium ideal for all mountain adventures in changeable weather conditions.

DETAILS

- Tri-fabric, zoned construction
- Active cut with high lift crotch
- Part elasticated waist with button / two-way zipped fly closure and webbing belt with low profile buckle
- Two zipped mesh lined front pockets
- Mesh lined thigh pockets/vents with two-way zip
- Ankle zips and press stud adjustment
- UV resistance 30+ SPF
- CORDURA® reinforced seat and knees
- PERTEX® Equilibrium Stretch used in Lumbar and rear thigh

FABRIC



Main body:
PERTEX® Equilibrium



Stretch:
PERTEX® Equilibrium
Stretch

CORDURA®

Reinforcement:
CORDURA® Mini-rip



COLOURS

Black / black



Main Properties

- + Patented 'denier gradient' structure moves moisture away from the skin
- + Weatherproof
- + Tough and durable
- + Very low comparable weight and packing volume

What is it?

Pertex® Equilibrium is the result of the extensive development work in the laboratory and field. Pertex® Equilibrium applies capillary action technology conventionally applied to base layer products. This means that during high aerobic activity, moisture is transported away from the skin to the outside of the fabric where it evaporates, hence creating body temperature 'Equilibrium'.



Dynamo Jacket



Breathability  Water-resistance  Durability  Weight 

PRODUCT SUMMARY

Lightweight multi-activity soft-shell jacket.

APPROXIMATE WEIGHT

350g / 12oz: MEDIUM

This incredibly versatile jacket combines low bulk and high durability with exceptional comfort and performance in use. PERTEX® Equilibrium Stretch has a unique denier gradient structure which both allows air to circulate near the skin, and mechanically moves moisture away from the skin to aid evaporation and cooling. Together with the tight weave's inherent wind resistance and an excellent water repellent finish, this jacket will keep the wearer dry, cool and comfortable in all light to moderate wind and rain. The clean lines and low bulk belie other features such as MONTANE® cross-vent system and a single hand cinchable collar. The Dynamo Jacket is the ideal lightweight soft-shell choice for a variety of aerobic outdoor sports in changeable conditions.

DETAILS

- Single hand adjustable elasticated draw-cord collar
- Active cut with drop tail
- Baffled two-way reversed front zip
- Self fabric cuffs with hook and loop closure with rubberised tabs
- Chest security pocket
- Two mesh lined venting pockets
- UV resistance 30+ SPF
- Single hand adjustable elasticated draw-cord hem
- MONTANE® Cross-Vent System

FABRIC



PERTEX® Equilibrium Stretch

COLOURS

Black
Navy



Scarab Jacket



Breathability  Water-resistance  Durability  Weight 

PRODUCT SUMMARY

Lightweight, high wicking soft-shell jacket.

APPROXIMATE WEIGHT

485g / 17oz: MEDIUM

The Scarab is a wind and water-resistant soft-shell jacket that combines a low weight, highly breathable shell with high wicking, moderate insulation. Ideally worn over just a technical baselayer, the lining is zoned with DRYACTIV® mesh in the underarm for enhanced breathability, DRYACTIV® Suede microfleece for light insulation and DRYACTIV® Thermal Mesh for a combination of the two. The outer shell is the acclaimed PERTEX® Equilibrium which is wind and water-resistant as well as being inherently very high wicking through capillary action - which does not wash out or diminish over time. Featuring a concealed hood and two large chest pockets the Scarab is a functional garment for a wide range of outdoor sports as well as crossing over to be suitable for everyday use.

DETAILS

- Active cut with slight drop tail
- Tri-component zoned lining
- Underarm Enhanced Breathing Panels (E.B.P.)
- Full length reversed and baffled semi-automatic front zip
- Roll-away hood with wired peak and single hand operated elasticated face aperture draw-cords
- DWR beardguard lined collar
- Two map-sized, mesh lined chest pockets with reversed zippers, positioned clear of waist belt or harness
- Hook and loop adjustable cuffs with MONTANE® logo 3M Scotchlite™ reflective dot
- Single hand adjustable elasticated draw-cord hem
- UV resistance 30+ SPF

FABRIC



Outer 1:
PERTEX® Equilibrium



Outer 2:
PERTEX® Equilibrium Ultra Light



Lining 1:
DRYACTIV® Suede



Lining 2:
DRYACTIV® Thermal Mesh



E.B.P.:
DRYACTIV® Mesh

COLOURS

Deep red / steel
True blue / steel
Black / steel



Puma 2.0 Jacket



Breathability ■■■■■ Water-resistance ■■■■■ Durability ■■■■■ Weight ■■■■■

PRODUCT SUMMARY

Multi-activity, soft-shell POLARTEC® jacket with Hardface® Technology.

APPROXIMATE WEIGHT

585g / 21oz: MEDIUM

The Puma 2.0 Jacket is a highly breathable soft-shell designed for a wide range of active outdoor sports in cool, windy and changeable conditions. The Puma 2.0 uses POLARTEC® Thermal Pro® with Hardface® Technology main body fabric, for water resistance and durability, and POLARTEC® Thermal Pro® Jersey in the underarm Enhanced Breathing Panels (E.B.P) for breathability and stretch performance. Puma 2.0 is a technical, highly breathable soft-shell jacket that is comfortable to wear all day in all but the very worst conditions.

DETAILS

- Active cut with stretch side panels and drop tail
- Underarm Enhanced Breathing Panels (E.B.P.)
- Baffled two-way reversed front zip with semi-automatic locking puller
- Two microfleece lined hand-warmer pockets
- Map sized chest security pocket
- Single hand operated elasticated draw-cord hem
- Adjustable cuffs with rubberised tabs
- Single hand adjustable draw-cord collar lined with DWR beardguard
- Flatlocked seams for comfort

FABRIC

 **THERMAL PRO®**
Main body:
POLARTEC® Thermal Pro®
with Hardface® Technology



 **THERMAL PRO®**
E.B.P:
POLARTEC® Thermal Pro®
Lightweight Jersey

COLOURS

Black / graphite
Deep red / graphite



Sabretooth Jacket



Breathability ■■■■■ Water-resistance ■■■■■ Durability ■■■■■ Weight ■■■■■

PRODUCT SUMMARY

Highly technical soft-shell POLARTEC® jacket with high RECYCLED content.

APPROXIMATE WEIGHT

615g / 22oz: MEDIUM

The Sabretooth Jacket is a highly featured and high performance jacket. Using Polartec's flagship Windpro® fabric it is highly wind resistant; stretchy through its use of 13% Spandex® yarns; durable and water resistant as a result of Hardface® Technology and as an added bonus uses 87% RECYCLED fibres. It is featured with a low bulk hood, 2 hand-warmer and 2 napoleon vented chest pockets, adjustable cuffs with rubberised tabs and an adjustable draw-cord hem. It is ideally suited to technical users looking for very high levels of soft-shell weather protection in a jacket that's comfortable to wear all day and year round in the mountains.

DETAILS

- Active cut with slight drop tail
- Baffled two-way front zip
- Low bulk hood
- Adjustable cuffs with rubberised tabs
- Two microfleece lined hand-warmer pockets
- Two map-sized vented napoleon chest pockets
- Single hand adjustable elasticated side and rear draw-cord hem
- Flatlocked seams in sleeves and back panel for comfort
- Single hand adjustable elasticated neck cinch

FABRIC

 **WIND PRO®**
Main body:
POLARTEC® Windpro® Stretch with Hardface®
Technology (87% RECYCLED)



COLOURS

Black



Super-Fly XT Jacket



Breathability ■■■■■■■■■■ Water-resistance ■■■■■■■■■■ Durability ■■■■■■■■■■ Weight ■■■■■■■■■■

PRODUCT SUMMARY

Lightweight, super breathable mountain waterproof jacket.

APPROXIMATE WEIGHT

590g / 21oz: MEDIUM

Building on the strengths of the Super-Fly, the Super-Fly XT is engineered for extreme use when heightened protection and durability are required. It features high tenacity reinforcement, printed reflective detailing, ergonomic hood design and rubberised cuff tabs. The breathability of the Super-Fly XT is unsurpassed by any other alpine waterproof jacket on the market today. Combining innovative technical features with lightweight reinforced construction makes it an ideal garment for alpine climbing, long backpacking trips and outdoor professional use.

DETAILS

- Reinforced shoulders, elbows, hips and seat
- Integral, fully adjustable, roll-away helmet hood with reinforced wired peak and elasticated volume adjuster
- Concealed, single hand operated, elasticated, non-whip front aperture draw-cords
- Full length front zip with hook and loop close storm baffle
- Two chest core vents
- Concealed waist draw-cord
- Two large pockets with water resistant zips
- Part elasticated, hook and loop adjustable glove-friendly cuffs with rubberised tabs
- Single hand adjustable elasticated draw-cord hem
- Two zipped Napoleon pockets with reinforced flaps
- Active cut with slight drop tail
- Reflective strips to chest, sleeves and hood
- Fully taped seams

FABRIC



eVent® Lightweight
3 Layer



eVent® Lightweight
Abrasion 3 Layer

COLOURS

Black / black

Alpine red / black

Moroccan blue / black



eVent® Halo Stretch Jacket



Breathability ■■■■■■■■■■ Water-resistance ■■■■■■■■■■ Durability ■■■■■■■■■■ Weight ■■■■■■■■■■

PRODUCT SUMMARY

Ultra-lightweight, super breathable, zoned stretch jacket.

APPROXIMATE WEIGHT

350g / 12oz: MEDIUM

The eVent® Halo Stretch Jacket is designed for the high energy outdoor athlete who demands low weight, supreme breathability and maximum freedom of movement in a waterproof shell. The jacket is zoned with stretch fabric in addition to the ultra-breathable eVent®; to offer increased durability on the hips and forearms and stretch in the underarm and across the back. Featuring reflective flashes, two mesh lined pockets, a further laser-cut chest pocket and ergonomic, fully adjustable helmet hood the Halo is a jacket for the committed outdoor athlete for all conditions use.

DETAILS

- Fully taped seams
- Integral, fully adjustable, roll-away helmet hood with wired peak and elasticated volume adjuster
- Single hand operated elasticated face aperture and hood draw-cords
- Full length two-way water resistant front zip with internal storm flap
- Two mesh lined chest pockets with double storm flaps
- Laser cut map sized chest pocket with water-resistant zip
- Single hand adjustable elasticated draw-cord hem
- Reflective flashes
- DWR beardguard patch on inner collar
- Hook and loop adjustable cuffs with rubberised tabs

FABRIC



Main Body:
eVent® Super
Lightweight 3 Layer



Stretch Reinforcement:
Entrant Lightweight Dermizax
EV Stretch 3 layer

COLOURS

Black / steel

Electric blue / steel

Burnt orange / steel



Hot 09: Mountain Adventure

Super-Fly Jacket



Breathability ■■■■■■ Water-resistance ■■■■■■ Durability ■■■■■■ Weight ■■■■■■

PRODUCT SUMMARY

Lightweight, waterproof, super breathable, technical eVent® jacket.

APPROXIMATE WEIGHT

475g / 17oz: MEDIUM

The Super-Fly is designed for fast moving outdoor activities where low weight and high breathability are key. Featuring an ergonomic hood and rubberised cuff tabs, the Super-Fly's functionality is unquestionable. The breathability of the Super-Fly is unsurpassed by any other waterproof jacket on the market today and the low weight is achieved by incorporating only essential features within the design of the jacket. This is a truly functional piece of kit for the outdoor enthusiast who values full waterproofness, superbly high levels of breathability and low weight above all else. As such, it is ideally suited for the fast moving mountaineer, lightweight backpacker or climber.

DETAILS

- Integral, adjustable, roll-away helmet hood with reinforced wired peak and elasticated volume adjuster
- Concealed, single hand operated, elasticated, non-whip face aperture draw-cords
- Full length two-way front zip with hook and loop close storm baffle
- Adjustable elasticated side draw-cords
- Two pockets with DWR zips
- Zipped chest security pocket
- Part elasticated, hook and loop adjustable cuffs with rubberised tabs
- Single hand adjustable elasticated draw-cord hem
- Active cut with drop tail
- Intelligent design with minimal seams and no four-way seam junctions
- Fully taped seams

FABRIC



eVent® Lightweight
3 Layer

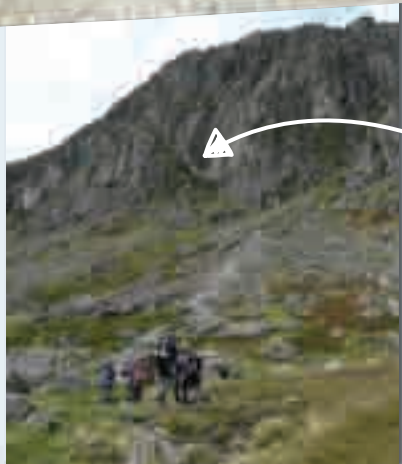
COLOURS

Black
Moroccan blue

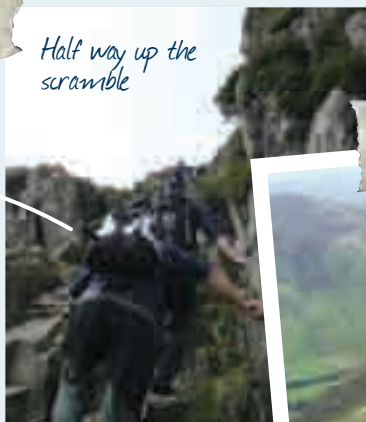
Burnt orange
Alpine red



Approaching Jake's Rake, Langdale, Lake District



Half way up the scramble



At the top, MMAD, Sept '07



Spectra Pants



Breathability  Water-resistance  Durability  Weight 

PRODUCT SUMMARY

Lightweight, super breathable, waterproof eVent® pants.

APPROXIMATE WEIGHT

500g / 18oz: MEDIUM

Spectra Pants are the ultimate lightweight waterproof pant. Not only are they extremely breathable, but they also have excellent freedom of movement through the strategically placed stretch panels and are durable enough for use in all environments and conditions. With removable braces, mountain-boot accommodating ankle volume adjustment and full-length water-resistant side zips, the Spectra Pants are all the waterproof pants you will ever need.

DETAILS

- Full length water-resistant side zips / vents with interior press-stud storm flap
- Stretch reinforcement panels on seat and knee
- FREEFLOW® Ballistic reinforcement to inner ankle
- Zipped volume adjustment to ankle
- Elasticated waist with adjustable, lockable draw-cord
- Active cut with high lift crotch
- Press-stud adjustable ankles
- Stealth reflective strip sewn into seams
- Removable elasticated braces
- Fully taped seams

FABRIC



Main body:
eVent® Lightweight
3 Layer



Reinforcement:
FREEFLOW® Ballistic



Stretch reinforcement:
FREEFLOW® Stretch



COLOURS

Black



Venture Jacket



Breathability Water-resistance Durability Weight

PRODUCT SUMMARY

Lightweight, highly breathable, super-durable waterproof jacket.

APPROXIMATE WEIGHT

475g / 17oz: MEDIUM

The Venture Jacket was conceived to give all the lightweight and high breathability benefits of eVent® fabric in a format which is extremely durable and accessibly priced. With NailHead reinforcement, two map pockets, 3M Scotchlite™ reflective, storm zip and an easy-move wired hood, the Venture Jacket is the perfect choice for multi-day backpackers and mountain-walkers carrying full packs in hostile conditions.

DETAILS

- Hi-tenacity nylon reinforcement on shoulder and seat
- Two laminated-map compatible zipped chest pockets
- 3M Scotchlite™ reflective detail
- Rollaway hood with wired peak and volume adjuster with single hand operated non-whip face aperture draw-cords
- Single hand adjustable elasticated draw-cord hem
- Two-way front zip with double storm flap
- DWR Beardguard lined collar
- Hook and loop adjustable cuffs
- Fully taped seams

FABRIC



Main body:
eVent® Hurricane
3 Layer



Reinforcement:
FREEFLOW® NailHead



Reflective:
3M Scotchlite™

COLOURS

Black
Chilli red
True blue



Venture Pants



Breathability Water-resistance Durability Weight

PRODUCT SUMMARY

Lightweight, highly breathable, super-durable waterproof pants.

APPROXIMATE WEIGHT

425g / 15oz: MEDIUM

The Venture Pants were conceived to give all the lightweight and high breathability benefits of eVent® fabric in a format which is extremely durable and accessibly priced. With NailHead reinforcement, 3M Scotchlite™ reflective trim, an active cut and ¾ length side zips, the Venture Pant is the perfect choice for multi-day backpackers and mountain-walkers in hostile conditions.

DETAILS

- Hi-tenacity nylon reinforcement on knees, seat and inner ankles
- 3M Scotchlite™ reflective detail
- Active cut with high lift crotch
- Articulated knees
- ¾ length two-way water-resistant side zips
- Press stud adjustable ankles
- Fully taped seams
- Elasticated waist with adjustable, lockable draw-cord

FABRIC



Main body:
eVent® Hurricane
3 Layer



Reinforcement:
FREEFLOW® NailHead



Reflective:
3M Scotchlite™

COLOURS

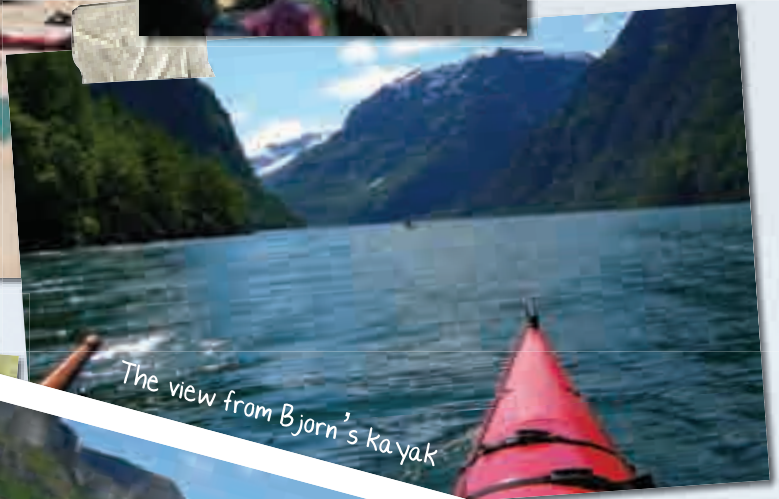
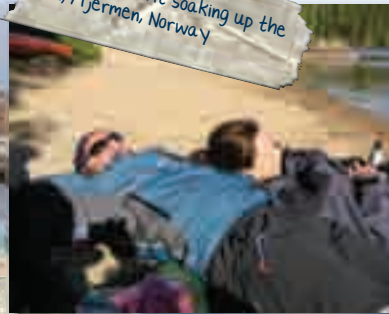
Black



Bjorn and Hans at the overnight stop, Aaland, Finland



Bjorn and Marit soaking up the sun, Mjermen, Norway



The view from Bjorn's kayak



Peter washing his boots mountain style



Naeroyfjorden, Norway, a UNESCO World Heritage Site and kayak parking spot!



Thanks to Staale Hoegden, Peter Straumann and Bjorn Jacobsen for the images

Atomic DT Jacket



Breathability Water-resistance Durability Weight

PRODUCT SUMMARY

Ultra-lightweight, fully hooded, waterproof and breathable jacket.

APPROXIMATE WEIGHT

240g / 8oz: MEDIUM

Designed for the high-energy outdoor athlete who demands low weight in a fully waterproof shell. The Atomic DT is what fast and light outdoor enthusiasts have been wanting for years, a waterproof that packs smaller and lighter than a grapefruit and weighs less than half that of most other 'lightweight' jackets available, yet still has the features expected of a full mountain shell such as a helmet compatible hood, active cut and vented pockets.

DETAILS

- Integral, adjustable, roll-away helmet hood with reinforced wired peak with single hand operated non-whip face aperture draw-cords
- Fully taped seams
- Full length two-way front zip with hook and loop close storm baffle
- Single hand adjustable, elasticated draw-cord hem
- Two large part-vent zipped chest pockets with storm flap
- Asymmetric active cut with drop tail
- DWR Beardguard lined chin guard
- Hook and loop adjustable cuffs
- Reflective flashes
- Attachable stuff sac

FABRIC



COLOURS

Black / graphite
Moroccan blue / graphite
Deep red / graphite



Atomic DT Pants



Breathability Water-resistance Durability Weight

PRODUCT SUMMARY

Ultra-lightweight fully waterproof and breathable trousers with side zips.

APPROXIMATE WEIGHT

170g / 6oz: MEDIUM

Sister product of the Velocity DT and Atomic DT Jackets, the Atomic DT Pants are the ultimate lightweight, waterproof and breathable outdoor pant. With all the protection and features of pants twice the weight, Atomic Pants are the thoughtful choice for long-distance backpackers, adventure racers, cyclists or anyone who needs a waterproof pant they can completely forget they are wearing or carrying.

DETAILS

- Elasticated waist with adjustable, lockable draw-cord
- Active cut with high lift crotch
- Articulated knees
- Reflective flashes
- Boot-compatible side zips
- Press stud adjustable ankles
- Attachable stuff sac
- Fully taped seams

FABRIC



COLOURS

Black



Fast & Lite products are the lightest weight and most breathable outdoor clothing available anywhere in the world today. Be it for running, biking or ultralight outdoor adventures, these products will help you go further, faster, longer...



Lite-Speed H2O Jacket



Breathability ■■■■■■■■■■ Water-resistance ■■■■■■■■■■ Durability ■■■■■■■■■■ Weight ■■■■■■■■■■

PRODUCT SUMMARY

The world's lightest weight hooded waterproof multi-activity jacket.

APPROXIMATE WEIGHT

135g / 5oz: MEDIUM

The Lite-Speed H2O is a very lightweight, simple, moderately waterproof and breathable jacket for active outdoor sports. Weighing in at less than an average eating apple at 135g, having a roll-away hood and 3M Scotchlite™ reflective flashes it's ideal for aerobic outdoor sports in inclement weather day or night.

DETAILS

- Active cut with drop tail
- Roll-away hood with single hand adjustable elasticated face aperture draw-cords
- Full length front zip with 3M Scotchlite™ reflective trim

- Single hand adjustable elasticated draw-cord hem
- 360° 3M Scotchlite™ reflective trim
- Self fabric elasticated cuffs
- Own stuff sac
- Micro seam tape

FABRIC



FREEFLOW® H2O



Reflective:
3M Scotchlite™

COLOURS

Black
Fluoro yellow
Burnt orange



Lite-Speed Jacket



Breathability ■■■■■■■■■■ Water-resistance ■■■■■■■■■■ Durability ■■■■■■■■■■ Weight ■■■■■■■■■■

PRODUCT SUMMARY

The lightest weight, weather-resistant, hooded jacket in the world.

APPROXIMATE WEIGHT

165g / 6oz: MEDIUM

The Lite-Speed Jacket is the classic lightweight weather-resistant jacket for performance outdoor sports. It features MONTANE® logo 3M Scotchlite™ reflective dots creating a 360° reflective effect and a combination of PERTEX® Microlight fabrics for complete windproofness and high breathability. Ultra-lightweight, extremely breathable and with an excellent level of weather protection relative to the overall weight, the Lite-Speed is uncompromisingly functional.

DETAILS

- Active cut with drop tail
- Full length, semi-automatic front zip with anti-snap baffle
- Roll-away hood with single hand adjustable non-whip face aperture draw-cords
- DWR Beardguard trimmed collar
- Elasticated self fabric cuffs
- Zipped chest security / map pocket
- Single hand operated elasticated draw-cord hem
- 3M Scotchlite™ reflective dots on cuffs / shoulder
- Own stuff sac with mini karabiner
- Retail merchandising package available

FABRIC



Main Body:
PERTEX® Microlight
Mini Rip-stop



Contrast:
PERTEX® Microlight
Cross Rip-stop



Reflective:
3M Scotchlite™

COLOURS

Electric blue / electric blue
Red / red
Graphite / black
Mango / mango
Ink / ink



Slipstream Jacket



Breathability Water-resistance Durability Weight

PRODUCT SUMMARY

The lightest weight weather-resistant jacket in the world.

APPROXIMATE WEIGHT

85g / 3oz: MEDIUM

The Slipstream is a highly functional item of weather protective clothing. It's ultra-lightweight and ultra simple thanks to having minimal seams and using PERTEX® Quantum fabrics. It offers weather protection and breathability in a package of less than 100 grams including the stuff sac and is suited to high energy running and biking for prolonged periods when ultra low weight is absolutely critical.

DETAILS

- Active cut with drop tail
- Full length, semi-automatic front zip with anti-snap baffle
- Articulated arms
- Self fabric elasticated hem and cuffs
- 3M Scotchlite™ 360° reflective dots / logo dots
- Own stuff sac
- Retail merchandising solutions package

FABRIC



Main:
PERTEX® Quantum Core



Contrast:
PERTEX® Quantum Ripstop

COLOURS

Ink / graphite
Burnt orange / graphite
Fluoro yellow / graphite



Featherlite Marathon Jacket



Breathability Water-resistance Durability Weight

PRODUCT SUMMARY

Ultra-lightweight, weather-resistant running jacket.

APPROXIMATE WEIGHT

120g / 4oz: MEDIUM

The Featherlite Marathon has been engineered for runners by runners, to be the lightest and most packable running specific jacket available in the world today. Whether running on city streets or mountainous fells, the Featherlite Marathon delivers high breathability and weather protection in a pack size which is smaller and lighter than the average eating apple. Incorporating the vital features of 360° reflective detailing, Afterburner vented Enhanced Breathing Panels and a sport specific fit, this is the ultimate ultra-lightweight running jacket.

DETAILS

- Full length 3M Scotchlite™ trimmed zip with anti-snap baffle and semi-automatic locking zip puller
- MONTANE® Afterburner vented Enhanced Breathing Panels (E.B.P.)
- Self fabric elasticated cuffs
- Single hand operated, elasticated draw-cord hem
- Sport specific active cut with articulated arms and slight drop tail
- 360° 3M Scotchlite™ reflective rear-view strips
- Close fit, hi-line collar
- Own stuff sac
- Retail merchandising package available

FABRIC



Outer:
PERTEX® Microlight
Mini Rip-stop



E.B.P.:
PEAQ® Air



Reflective:
3M Scotchlite™

COLOURS

Ink / graphite
Burnt orange / graphite
Fluoro yellow / graphite
Steel / graphite



Featherlite Smock



Breathability Water-resistance Durability Weight

PRODUCT SUMMARY

The original ultra-lightweight weather-resistant shirt.

APPROXIMATE WEIGHT

100g / 3.5oz: MEDIUM

The Featherlite Smock is the original ultra minimalist windshirt. It has a two-way front zip, MONTANE® logo 3M Scotchlite™ reflective dots creating a 360° reflective effect and a combination of PERTEX® Microlight fabrics for complete windproofness. It remains one of the lightest, smallest packed and most breathable windshirts in the world, and as such it is ideal for outdoor activities that demand a simple garment that provides high levels of weather protection with minimal weight penalty.

DETAILS

- Active cut with drop tail
- Self coloured two-way, semi-automatic, chest zip with anti-snap baffle
- Elasticated self fabric cuffs and hem
- 3M Scotchlite™ reflective dots on cuffs / shoulder
- Own stuff sac
- Retail merchandising package available

FABRIC



Main Body:
PERTEX® Microlight
Mini Rip-stop



Contrast:
PERTEX® Microlight
Cross Rip-stop



Reflective:
3M Scotchlite™

COLOURS

Mango / mango
Electric blue / electric blue
Red / red
Graphite / black
Fluoro yellow / fluoro yellow



Featherlite Pants



Breathability Water-resistance Durability Weight

PRODUCT SUMMARY

The original ultra-lightweight weather-resistant pants.

APPROXIMATE WEIGHT

120g / 4oz: MEDIUM

These wind and shower-proof pants are the original ultra minimalist weather-resistant trousers. They are an uncompromisingly functional item of equipment, which packs smaller and weighs less than a typical eating apple yet features reflective detailing and a versatile calf cinch. Featherlite Pants are lightweight in the extreme and perfectly complement all the other products in the MONTANE® Fast and Lite range. Designed for running, biking, lightweight hiking, adventure racing or any other outdoor activity that demands a high weather protection to weight ratio.

DETAILS

- Active cut with high lift crotch
- MONTANE® Enhanced Breathing Panel (E.B.P.) in lumbar
- Hook and loop adjustable calf for improved fit when running or biking
- Elasticated waist with lockable draw-cord
- Articulated knee
- Elasticated ankles
- Calf length ankle zips
- 360° 3M Scotchlite™ reflective strips
- Own stuff sac
- Retail merchandising package available

FABRIC



Outer:
PERTEX® Microlight
Mini Rip-stop



E.B.P.:
PEAQ® Air



Reflective:
3M Scotchlite™

COLOURS

Black / black



Tadas Jersovas and Andrius Stonys,
Chatyr-Dag, Crimean mountains , Ukraine



Reflective works even during the day!



Tadas and Andrius, summit of Eklizi Baurun, Ukraine



The long road ahead...



Trail Tights



Breathability Water-resistance Durability Weight

PRODUCT SUMMARY

Lightweight, high stretch, zoned tights.

APPROXIMATE WEIGHT

220g / 8oz: MEDIUM

Designed with the committed runner or biker in mind, the Trail Tights bring a new dimension to performance legwear. They use two grades of stretch nylon, one for moderate warmth and the other to guarantee a close, muscle compressive fit; and DRYACTIV® Express for Enhanced Breathing Panels where high breathability is required. Featuring an ergonomic active cut, reflective flashes and a small zipped rear pocket the Trail Tights are ideal for training or competition and contribute to improved blood circulation, muscle support and recovery.

DETAILS

- Tri-fabric zoned active cut
- Enhanced Breathing Panels (E.B.P.)
- Elasticated waist
- 3M Scotchlite™ reflective trim
- Ankle zips
- Rear zipped pocket

FABRIC



Main body:
CARVICO® Alaska



Stretch:
CARVICO® Atlanta



E.B.P.:
DRYACTIV® Express



Reflective:
3M Scotchlite™

COLOURS

Black / black / graphite
Electric blue / ink / graphite



Sonic Shorts



Breathability Water-resistance Durability Weight

PRODUCT SUMMARY

Lightweight multi-activity shorts.

APPROXIMATE WEIGHT

150g / 5oz: MEDIUM

Sonic Shorts are lightweight running shorts with additional features making them really suited to prolonged use: tough water and wind resistant fabric, two lightweight pockets and full 360° 3M Scotchlite™ reflective trim.

DETAILS

- Elasticated waist with cord tie
- 3M Scotchlite™ reflective detail
- Two zipped side pockets with internal key pocket
- Internal mesh brief

FABRIC



Main body:
Cotton-feel TACTEL®



Brief:
DRYACTIV® Mesh



Reflective:
3M Scotchlite™

COLOURS

Steel / black / silver
Steel / black / mango
Navy / graphite / silver



Testing new products on lunchtime run,
Wansbeck Country Park, Northumberland



Crossing the river Wansbeck,
close to Montane HQ, Northumberland



Aero Cap



Breathability Water-resistance Durability Weight

PRODUCT SUMMARY

Lightweight Stretchy Sports Cap.

APPROXIMATE WEIGHT

60g / 2.1oz

Designed for the high activity trekker or runner, the Aero is a high performance outdoor cap which provides sweat absorption, eye protection, sun protection and moderate warmth. Using TACTEL® Dynamic for a wind and water resistant stretch fit over the crown and DRYACTIV® Express for high breathability on the side panels it is a completely functional cap. For daytime use the pre-curved peak provides shade from the sun and for nighttime, 3M Scotchlite™ trim front and back provides additional visibility.

DETAILS

- Bi-fabric, zoned construction
- Pre-curved peak
- 360° 3M Scotchlite™ reflective detail
- Hook and loop adjustable size
- Wicking inner band

FABRIC



Main body:
TACTEL® Dynamic



Side Panels:
DRYACTIV® Express



Reflective:
3M Scotchlite™

COLOURS

Black / black
Black / berry
Black / graphite



Dragonfly Shirt



Breathability Water-resistance Durability Weight

PRODUCT SUMMARY

Lightweight POLARTEC® Power Dry® expedition baselayer shirt.

APPROXIMATE WEIGHT

200g / 7oz: MEDIUM

The Dragonfly Shirt uses two grades of POLARTEC® Power Dry® fabric to create a baselayer suitable for everyday active use in wintry conditions. POLARTEC® Power Dry® Featherweight is zoned in the upper chest and underarms for high wicking and POLARTEC® Power Dry® Midweight is deployed in the main body for additional warmth whilst retaining high wicking and odour resistant properties. It is an extremely simple garment, designed to fit well and perform brilliantly.

DETAILS

- Bi-fabric zoned construction
- Flatlocked stitching for comfort
- Generous reversed chest zip
- Reflective logo detail
- Odour resistant

COLOURS

Black
True blue
Burnt orange

FABRIC



POWER DRY®

Main body:
POLARTEC®
Power Dry® Midweight



POWER DRY®

High wicking:
POLARTEC®
Power Dry® Featherweight



Terra T-shirt



Breathability  Water-resistance  Durability  Weight 

PRODUCT SUMMARY

High wicking, technical, multi-sport shirt.

APPROXIMATE WEIGHT

135g / 5oz: MEDIUM

The Terra T-shirt uses the well known wicking and moisture management characteristics of SPORTWOOL® in a short sleeve T-shirt format, that is ideal for summer trekking, running and biking, yet also subtly styled so as not to appear out of place if worn casually. With attractive, contemporary styling, high performance and easy care, the Terra T-shirt is ideal for a multitude of sports throughout the summer months.

DETAILS

- SPORTWOOL® raglan sleeve construction
- Relaxed active cut
- Flat-locked contrast seams
- UPF 40+ protection

FABRIC



COLOURS

Navy / pewter
Black / pewter



Bionic T-shirt



Breathability  Water-resistance  Durability  Weight 

PRODUCT SUMMARY

High wicking, lightweight, SPORTWOOL® technical base-layer.

APPROXIMATE WEIGHT

120g / 4oz: MEDIUM

The SPORTWOOL® Bionic base-layer T-shirt combines all the well-known performance properties of both Merino wool and knitted polyester, in an active cut, flat-seam, lightweight T-shirt format. In use, the Bionic rapidly moves moisture away from the skin making for dry-to-the-touch comfort; it effectively enhances the natural cooling effects of evaporation, is odour free and provides natural UV protection and elasticity. With its simple good looks and high performance the Bionic operates perfectly as both base-layer within a performance clothing system, or on its own as a high comfort technical T-shirt.

DETAILS

- SPORTWOOL® construction
- Active cut
- Flat-locked contrast seams
- 3M Scotchlite™ reflective detail
- UPF 40+ protection

FABRIC



SPORTWOOL® Grid



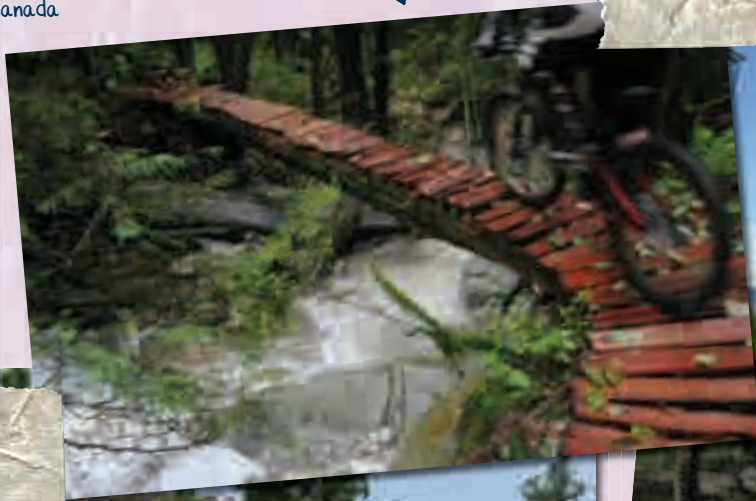
Reflective:
3M Scotchlite™

COLOURS

Black / deep blue / silver
Fluoro yellow / silver / silver
Navy / silver / silver
Mango / burnt orange / silver



Stream crossing, Burke mountain,
Port Coquitlam, British Columbia,
Canada



Helpful Kal Lake resident helps us to
get back on the right trail



Tim and Brian ripping
a nice bit of
singletrack



Matt and Patti, the second of three times this
trail would be accidentally ridden, Kal Lake, British Columbia, Canada

© All images Copyright Euan Forrester

Stormrider Jacket



Breathability ■■■■■■■■■■ Water-resistance ■■■■■■■■■■ Durability ■■■■■■■■■■ Weight ■■■■■■■■■■

PRODUCT SUMMARY

Lightweight, super-breathable cycling jacket.

APPROXIMATE WEIGHT

300g / 11oz: MEDIUM

The eVent® Stormrider Jacket is designed for the high-energy cyclist who demands supreme breathability and really low weight in a simple waterproof shell format. eVent® Lightweight and Super-Lightweight fabrics are zoned for increased breathability on the Fluoro yellow colourway and increased durability on the Electric blue. Featuring an active, bike-specific cut, MONTANE® part-vent pockets and 360° reflective trim, this jacket is ideal for all types of foul weather riding, both on and off road, where low weight and high breathability are always paramount.

DETAILS

- Cycle specific active cut with pre-bent, extra-length arms and extended drop tail
- Full length two-way zip with storm baffle
- Two MONTANE® zipped part-vent pockets with storm flaps
- Hook and loop adjustable collar
- Single hand adjustable elasticated draw-cord hem
- Reflective flashes
- Part elasticated hook and loop adjustable cuffs
- Large zipped rear venting pocket
- Fully taped seams
- DWR Beardguard lined collar

FABRIC



eVent® Super
Lightweight 3 Layer



eVent®
Lightweight 3 Layer

COLOURS

Electric blue / graphite
Fluoro yellow / graphite



Velocity DT Jacket



Breathability ■■■■■■■■■■ Water-resistance ■■■■■■■■■■ Durability ■■■■■■■■■■ Weight ■■■■■■■■■■

PRODUCT SUMMARY

The world's lightest weight, waterproof and breathable cycling jacket.

APPROXIMATE WEIGHT

220g / 8oz: MEDIUM

Designed for the high-energy cyclist who demands dependable design and ultra low weight in a fully waterproof shell. Featuring reflective detail, a cycle sport active cut, roll-up venting sleeve forearms, a micro-fleece lined collar and two vented pockets, this is no stripped down racer. The Velocity DT is what fast and light bikers have been wanting for years, a waterproof that packs smaller and lighter than the average multi-tool and weighs less than half that of most other 'lightweight' jackets available.

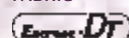
DETAILS

- Cycle sport specific active cut with pre-bent, extra-length arms and drop tail
- Two MONTANE® part-vent zipped chest pockets with storm flap
- DWR Beardguard lined collar
- Full length two-way zip with storm baffle
- Part elasticated hook and loop adjustable cuffs
- Reflective strips
- Hook and loop adjustable collar
- Single hand adjustable, elasticated draw-cord hem
- Attachable stuff sac

COLOURS

Black / graphite
Fluoro yellow / graphite
Deep red / graphite

FABRIC



ENTRANT® DT



Rear view



Nightvision effect



Hot 09: Fast & Lite

Featherlite Vélo H2O Jacket



Breathability ■■■■■■■■■■ Water-resistance ■■■■■■■■■■ Durability ■■■■■■■■■■ Weight ■■■■■■■■■■

PRODUCT SUMMARY

The worlds lightest weight waterproof cycling jacket.

APPROXIMATE WEIGHT

125g / 4oz: MEDIUM

The Vélo H2O is an ultra-lightweight, simple, moderately waterproof and breathable jacket for the active cyclist. Weighing in at less than an inner tube at 125g, with a vented back panel and 3M Scotchlite™ reflective flashes it's ideal for road and MTB riding in inclement weather day or night.

DETAILS

- Cycle specific active cut with pre-bent, extra-length arms and extended drop tail
- Micro seam tape
- Back ventilation
- Full length front zip with 3M Scotchlite™ reflective trim
- Single hand adjustable elasticated draw-cord rear hem
- 360° 3M Scotchlite™ reflective trim
- Self fabric elasticated cuffs
- Own stuff sac

FABRIC



FREEFLOW® H2O



Reflective:
3M Scotchlite™

COLOURS

Black
Fluoro yellow
Silver

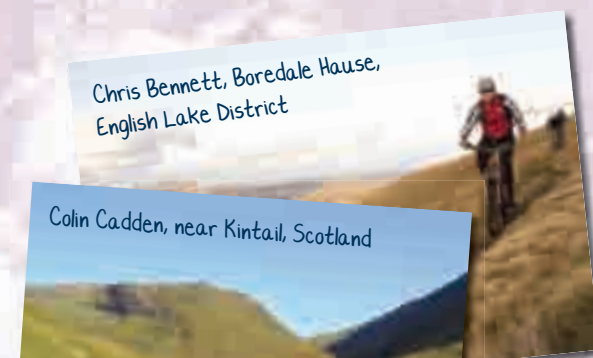


Andy Jones, Cullardoch,
Southern Cairngorms, Scotland



© Gary Galpin

Chris Bennett, Boredale Hause,
English Lake District



Colin Cadden, near Kintail, Scotland



Andy Jones, part way through
100 mile epic ride in the
Scottish Highlands



Sportwool® Torque Jersey



Breathability ■■■■■■■■■■ Water-resistance ■■■■■■■■■■ Durability ■■■■■■■■■■ Weight ■■■■■■■■■■

PRODUCT SUMMARY

High wicking, mid weight technical cycle jersey.

APPROXIMATE WEIGHT

300g / 11oz: MEDIUM

The SPORTWOOL® Torque Jersey combines essential cycling features with zoned SPORTWOOL® Energy fabric in the underarm and back for high wicking and enhanced breathability - and SPORTWOOL® Synchro in the front chest and sleeves for additional warmth. SPORTWOOL® blends Merino wool with Polyester to produce a fabric which is highly vapour and moisture moving whilst having a comfortable finish against the skin and being moderately stretchy. Couple this with plenty of reflective trim, four rear pockets, a full length zip, and you have an ideal jersey for cooler conditions or even the foulest weather when teamed with a MONTANE® bike shell jacket.

DETAILS

- Cycle specific active cut with drop tail and pre-bent, extra-long sleeves
- Bi-fabric zoned construction with enhanced breathing panels (E.B.P.)
- Full length, semi-automatic front zip
- Flat-locked seams
- Three rear pockets and a zipped security pocket

- Elasticated cuffs and hem
- 3M Scotchlite™ reflective trim and MONTANE® logo dots
- UPF 40+ protection
- Ergonomic collar

FABRIC



Main body:
SPORTWOOL® Synchro

E.B.P.:
SPORTWOOL® Energy

Reflective:
3M Scotchlite™

COLOURS

Black / graphite
Alpine red / graphite



Rear View



Cadence Jersey



Breathability ■■■■■■■■■■ Water-resistance ■■■■■■■■■■ Durability ■■■■■■■■■■ Weight ■■■■■■■■■■

PRODUCT SUMMARY

High wicking, lightweight technical cycle jersey.

APPROXIMATE WEIGHT

220g / 8oz: MEDIUM

The Cadence Jersey combines essential cycling features with advanced fabrics zoned for maximum performance. By zoning SPORTWOOL® with its intelligent blend of Merino wool and Polyester; and panels of stretchy DRYACTIV® Express the Cadence jersey not only efficiently wicks moisture but also has areas of enhanced breathability. With flatlocked seams throughout for comfort, three rear pockets, a deep front chest zip and reflective detailing, this jersey is ideal for long days in the saddle and partners brilliantly with MONTANE® cycle shell garments when the weather turns.

DETAILS

- Cycle specific active cut
- Bi-fabric, zoned construction
- Flat-locked seams
- Three rear pockets and a zipped security pocket
- Elasticated hem and cuffs
- Reflective details and reflective MONTANE® logo dot
- UPF 40+ protection (SPORTWOOL®)
- Deep, semi-automatic, front zip
- Ergonomic Collar

FABRIC



Main body:
SPORTWOOL® Energy



E.B.P.:
DRYACTIV® Express



Reflective:
3M Scotchlite™

COLOURS

Black / graphite
Electric blue / graphite



Featherlite Vélo Jacket



Breathability ■■■■■■■■■■ Water-resistance ■■■■■■■■■■ Durability ■■■■■■■■■■ Weight ■■■■■■■■■■

PRODUCT SUMMARY

Ultra-lightweight, weather-resistant cycling jacket.

APPROXIMATE WEIGHT

125g / 4oz: MEDIUM

The Featherlite Vélo has been engineered to be the world's lightest and most packable cycle specific shell jacket. Designed for the cyclist who rides fast and light and demands high breathability in a pack size smaller and lighter than the average inner tube, the Featherlite Vélo is an essential part of the cyclist's kit that will never be left at home. Incorporating the vital features of 360° reflective detailing, Afterburner E.B.P. venting and a sport specific fit, this is the ultimate ultra-light cycling jacket.

DETAILS

- Full length 3M Scotchlite™ trimmed zip with anti-snap baffle
- MONTANE® Afterburner vented Enhanced Breathing Panels (E.B.P.)
- Self fabric elasticated cuffs and hem
- Sport specific active cut with pre-bent, extra-length arms and extended drop tail
- 360° 3M Scotchlite™ reflective rear-view strips
- Close fit, hi-line collar
- Attachable stuff sac
- Retail merchandising package available

COLOURS

Electric blue / graphite
Fluoro yellow / graphite

Red / graphite
Black / graphite

FABRIC



Outer:
PERTEX® Microlight
Mini Rip-stop

PEAQ® AIR

E.B.P.
PEAQ® Air



Reflective:
3M Scotchlite™



Back view



Pursuit Ergo Shorts



Breathability ■■■■■■■■■■ Water-resistance ■■■■■■■■■■ Durability ■■■■■■■■■■ Weight ■■■■■■■■■■

PRODUCT SUMMARY

Muscle supportive cycle shorts with internal zoned padding.

APPROXIMATE WEIGHT

150g / 5.5oz: MEDIUM

Pursuit Ergo Shorts look like other cycle shorts but actually they are something quite different. Atlanta fabric manufactured in Italy is not only pill and abrasion resistant, but also incorporates Xtra Life LYCRA® which gently compresses the thigh muscles which in turn reduces the distribution of lactic acid and helps to reduce fatigue and promote recovery. The anti-bacterial internal seat-pad is fully zoned with dual-density foam and features 4-way stretch to move comfortably with the body in use. The combination of high quality fabric and seat-pad ensures that Pursuit Ergo shorts fit well, are extremely comfortable even after prolonged use and actively contribute towards a better ride. Enthusiastic amateurs and professionals alike will find these to be one of the best cycle shorts available today.

DETAILS

- Sport specific active cut with high back
- Flat-locked seams, elasticated waist and leg grippers
- Internal, 4-way stretch, triple layer 8mm zoned pad by TMF Cycling Pads of Italy
- Pad incorporates 'Hygienic' by ESCHLER using silver ion technology for anti-bacterial and anti-fungal properties
- Reflective MONTANE® logo detail
- UPF 40+ protection

FABRIC

CARVICO

Fabric:
CARVICO® Atlanta



Pad:
TMF Professional

COLOURS
Black



Products in the new Live Lite range are not only functional garments ideal for everyday life, outdoor adventures and travel throughout the year, but are **Recycled and Recyclable.**



We cannot solve the world's environmental problems alone or overnight, we can however make changes for the better...



All MONTANE® Live Lite products use recycled fabrics and in turn are recyclable through the ECO-CIRCLE™, the world's first closed loop recycling system for polyester products.

The process...

- ① Returned garments broken down into small pieces
- ② Break down further into granular form
- ③ Production of raw material by molecular level chemical reaction to create polyester chips
- ④ Processing into fibre by dissolving chips and spinning new polyester yarn



The ECO-CIRCLE™ recycling system reduces...

- CO₂ by **77%***
- Energy consumption by **84%***
- Oil consumption by **100%***

*compared to production of virgin polyester



Horizon Jacket



Breathability Water-resistance Durability Weight

PRODUCT SUMMARY

Hi loft, recycled and recyclable fleece jacket.

APPROXIMATE WEIGHT

460g / 16oz: MEDIUM

The Horizon Jacket uses a 100% recycled polyester fleece fabric with a knitted outer and a high loft brushed inner face for sleek looks and impressive thermal performance from the lightweight fabric. Featuring flat-locked seams throughout, two zipped hand pockets and drawcord adjustable hem, the Horizon jacket has the essential features for active outdoor use or more general day to day outdoor use. As with all other MONTANE® Live Lite products it can be returned to MONTANE® at the end of its life for complete recycling.

DETAILS

- Active cut
- Full length front zip with semi-automatic locking puller
- Two zipped mesh-lined hand-warmer pockets
- Single hand operated, elasticated hem draw-cord
- Trimmed with ECO cotton feel fabric
- Recyclable through ECO-CIRCLE™

FABRIC



ECO Hi Loft Fleece



COLOURS

Dark Green / chestnut
Moroccan Blue / chestnut
Paprika / chestnut



Filament Jacket



Breathability Water-resistance Durability Weight

PRODUCT SUMMARY

Ultra-lightweight, weather-resistant recycled and recyclable jacket.

APPROXIMATE WEIGHT

185g / 6.5oz: MEDIUM

The Filament Jacket uses a combination of PERTEX® Quantum and Microlight ECO fabrics meaning that it is more than 98% recycled fabric, ultra-lightweight and contemporarily styled with a combination of plain weave and random rip fabrics. It features 2 zipped chest pockets, a rollaway hood with shaped peak and internal draw-cords. It conveniently packs into its own pocket or stuff sac, which along with the low weight means that this is the ideal garment for complete wind protection and modest protection from the rain, whether on a year long global adventure or a relaxed walk in changeable weather. As with all the other products in the Live Lite range, it can be returned to MONTANE® at the end of its life and fully recycled.

DETAILS

- Active cut
- Full length, semi-automatic front zip with anti-snap baffle
- Rollaway, foam peaked, lined hood with concealed single hand adjustable face aperture draw-cords
- Two, map-sized, zipped chest pockets
- Single hand operated, elasticated draw-cord hem
- Hook and loop adjustable cuffs
- Own stuff sac
- Recyclable through ECO-CIRCLE™

COLOURS

Chestnut / chestnut, Graphite / chestnut, Paprika / chestnut

FABRIC



PERTEX® Quantum ECO
Mini Rip



PERTEX® Microlight ECO
Random Rip



Aubrey Laurence and Jen Czak, Crack canyon,
San Rafael swell, Utah, USA



Climbing up the dry canyon
hoping it doesn't start to rain!



Incredible rock formations created by
hundreds of years of flood water



Bag Pants



Breathability Water-resistance Durability Weight

PRODUCT SUMMARY

Do anything, performance recycled and recyclable pants.

APPROXIMATE WEIGHT

400g / 14oz: MEDIUM

The Bag Pants, so named because a percentage of the recycled material used to manufacture the fabric is post consumer waste such as unwanted carrier bags. They are comfortable, well cut pants for light hiking or simply spending a more relaxed day outdoors. Combining recycled polyester with a small percentage of organic cotton these pants are both water resistant and quick drying as well as exceptionally comfortable. Featuring double fabric on the knee along with four pockets, they are functional and simply styled. As with all other MONTANE® Live Lite products they can be returned at the end of their life for complete recycling.

DETAILS

- Active cut
- Two front hip pockets
- One rear storage pocket
- One rear zipped security pocket
- Double layer, articulated knees
- Contrast stitching detail
- Wide belt loops
- Button / zip fly with internal waist drawcord
- Recyclable through ECO-CIRCLE™

FABRIC



COLOURS

Chestnut / chestnut
Graphite / chestnut
Ishihara green / chestnut



Infinity T-shirt



Breathability Water-resistance Durability Weight

PRODUCT SUMMARY

Performance recycled and recyclable wicking T-shirt.

APPROXIMATE WEIGHT

180g / 6oz: MEDIUM

The Infinity T-shirt uses a high wicking 100% recycled polyester fabric for effective moisture management and comfort when travelling and trekking across the globe. Styled to blend comfortably into everyday life and in a range of contemporary colours the Infinity T-shirt is a simple but effective garment, which offers a double benefit to the environment because when it eventually wears out it can be returned to MONTANE® and simply be recycled into another one.

DETAILS

- Active cut
- Contrast top stitching detail
- Contemporary style lines
- Recyclable through ECO-CIRCLE™

FABRIC



COLOURS

Burnt orange
Ink
Dark green





Nicky on the cairn on top of the Stoor, Isle of Skye, Scotland



Path to the Stoor, Isle of Skye

← Thanks to Jamie from www.trekkingbritain.com

Women's Mountain Adventure



Mountain Adventure products are year-round soft-shell and insulation garments designed specifically for women to offer low bulk comfort, weather protection and warmth in a low weight package.



Terra Stretch Shorts



Breathability Water-resistance Durability Weight

PRODUCT SUMMARY

Lightweight, stretch, durable outdoor shorts.

APPROXIMATE WEIGHT

190g / 7oz: UK 12

These multi-function shorts are the sister product of the Terra Stretch Pants. With the same fabric, which combines equal quantities of CORDURA® for durability and TACTEL® for wind and water resistance with 12% LYCRA® for excellent freedom of movement the Terra Stretch Shorts offer a really intelligent balance between comfort and durability. With only the essential features of two hand pockets and a large zipped security pocket the shorts are kept to an extremely simple and lightweight 190g format, which is perfect for all active summer outings.

DETAILS

- Two hand pockets
- Fixed waist with button / zipped fly closure and webbing belt with low profile buckle
- Concealed zipped security pocket
- Ergonomic hip seams for comfort
- Diamond crotch for freedom of movement

FABRIC



TACTEL® Dynamic

COLOURS

Black



Terra Stretch Pants



Breathability Water-resistance Durability Weight

PRODUCT SUMMARY

Lightweight, stretch, durable women's outdoor pants.

APPROXIMATE WEIGHT

275g / 10oz: UK 12

These multi-function trousers are designed to be used for a wide range of outdoor sports – where good fit, comfort, durability and moderate weather protection are important. With fabric combining equal quantities of CORDURA® for durability and TACTEL® for wind and water resistance with 12% LYCRA® for excellent freedom of movement, the Terra Stretch strikes a really intelligent balance between comfort, durability, weather protection, and good looks. With only the essential features of two hand pockets, a large zipped security pocket and adjustable ankles this pant is kept to an extremely simple and lightweight 275g format, meaning it's likely to always be at the top of your kit list.

DETAILS

- Two hand pockets
- Fixed waist with button / zipped fly closure and webbing belt with low profile buckle
- Concealed zipped security pocket
- Press stud adjustable ankles
- Ergonomic hip seams for comfort
- Diamond crotch for freedom of movement

FABRIC



TACTEL® Dynamic

COLOURS

Black



Terra Pants



Breathability ■■■■■■■■■■ Water-resistance ■■■■■■■■■■ Durability ■■■■■■■■■■ Weight ■■■■■■■■■■

PRODUCT SUMMARY

Lightweight, highly technical, trekking and scrambling pants.

APPROXIMATE WEIGHT

300g / 11oz: UK 12

Terra Pants are lightweight, hard-wearing, weather-resistant and highly breathable trousers, suitable for a wide range of outdoor sports. The TACTEL® nylon outer provides a cotton-like feel, which doesn't rustle or crackle, combined with the durability and fast drying qualities of nylon. The tight weave of TACTEL® together with a TEFLON® surface finish helps water to bead up and run off the fabric face. Terra's very small pack size, fast drying properties and extremely durable reinforcements make them the ideal choice for any serious adventure traveller or mountaineer.

DETAILS

- Women's specific active cut with high lift crotch
- Part elasticated waist with button / zipped fly closure and webbing belt with low profile buckle
- Zipped pull out security pocket
- Two zipped mesh lined front pockets
- Mesh lined thigh vents
- Reinforced seat, knee and inner ankle
- Pre-bent knee
- Ankle zips and press stud adjustable ankles
- Available in short leg length (black only)
- UPF 40+ protection

COLOURS

Black / black
Graphite / graphite
Ink / ink

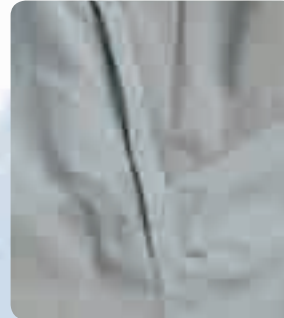
FABRIC



Main body:
Cotton-feel TACTEL®

CORDURA®

Reinforcements:
CORDURA® Mini-Rip



Looking south through the mist and
inversions to the mountains of mid-Wales

Jamie Bassnett

Dynamo Jacket



Breathability ■■■■■■■■■■ Water-resistance ■■■■■■■■■■ Durability ■■■■■■■■■■ Weight ■■■■■■■■■■

PRODUCT SUMMARY

Lightweight, multi-activity soft-shell jacket.

APPROXIMATE WEIGHT

300g / 11oz: UK 12

This incredibly versatile jacket combines low bulk and high durability with exceptional comfort and performance in use. PERTEX® Equilibrium Stretch has a unique denier gradient structure which both allows air to circulate near the skin, and mechanically moves moisture away from the skin to aid evaporation and cooling. Together with the tight weave's inherent wind resistance and an excellent water repellent finish this jacket will keep the wearer dry, cool and comfortable in all light to moderate wind and rain. The clean lines and low bulk belie other features such as MONTANE® cross-vent system and a single hand cinchable collar. The Dynamo Jacket is the ideal lightweight soft-shell choice for a variety of aerobic outdoor sports in changeable conditions.

DETAILS

- Single hand adjustable elasticated draw-cord collar
- Female specific active cut with drop tail
- Baffled two-way reversed front zip
- Self fabric cuffs with hook and loop closure and rubberised tabs
- Chest security pocket
- Two large mesh lined pockets
- Soft, water-resistant fleece lined collar
- Single hand adjustable elasticated draw-cord hem

FABRIC



PERTEX® Equilibrium Stretch

COLOURS

Black
Navy



Jenny, Bess, Nicky, James and James,
Cadair Berwyn, Feb 08



Admiring the freezing
waters of Llyn Llunaw



Gazelle Jacket



Breathability Water-resistance Durability Weight

PRODUCT SUMMARY

Ultra-lightweight, high wicking, POLARTEC® fleece jacket.

APPROXIMATE WEIGHT

240g / 8oz: UK 12

Using POLARTEC® Power Dry®, the Gazelle Jacket has the twin performance properties of being both very high wicking for active use in the spring and summer and also highly thermally efficient, making it an excellent heavyweight base-layer for the colder autumn and winter months. Lightweight and simply cut in the MONTANE® active female shape the jacket is close fitting yet flattering. With the added benefit of DRYACTIV® Express fabric for extra high wicking stretch performance under the arms, the Gazelle looks and feels great, and has brilliant all-season performance.

DETAILS

- Women's specific active cut with slight drop tail
- Front zip with semi-automatic locking puller
- Zipped sleeve pocket with MP3 player access
- Underarm Enhanced Breathing Panels (E.B.P.) with high wicking performance

FABRIC



COLOURS

Cherry
Berry
Black



Liberty Jacket



Breathability Water-resistance Durability Weight

PRODUCT SUMMARY

Lightweight, zoned POLARTEC® jacket.

APPROXIMATE WEIGHT

325g / 11oz: UK 12

Using a combination of POLARTEC® Classic 200 in the main body and POLARTEC® Thermal Pro® Jersey for stretch comfort in the underarm, hips and cuffs, the Liberty Jacket provides high warmth yet is also highly breathable. It is a simple, functional, good-looking, well shaped jacket with minimal features to keep it both lightweight and low maintenance. For the woman who is active outdoors throughout the year the Liberty Jacket will be a constant companion.

DETAILS

- Women's specific active cut
- Bi fabric zoned construction
- Full length two-way reversed front zip with baffle
- Two zipped, mesh lined hand-warmer pockets
- Single hand adjustable elasticated draw-cord hem and collar

FABRIC



COLOURS

Cherry / steel
Azure / steel
Black / steel
Vivid green / steel





SOME OF OUR GREATEST INNOVATIONS CHANGE NOTHING.

Why are we developing innovative new fabrics from recycled materials? Why are we integrating renewables like wool and corn into new “hybrid” fabrics? Why are our mills energy efficient? Because we believe that the less we all change our world, the more we all can enjoy it.

 **POLARTEC®**
FORWARD FABRIC™

Panther Jacket



Breathability Water-resistance Durability Weight

PRODUCT SUMMARY

Lightweight, high loft, POLARTEC® fleece jacket.

APPROXIMATE WEIGHT

550g / 18oz: UK 12

Using POLARTEC® Wind Pro®, the Panther Jacket has an exceptionally high warmth to weight ratio for a fleece. However, the real beauty of this fabric is on the inside – the long brushed fibres not only trap enormous amounts of air and are naturally very high wicking, but they also feel wonderfully soft and comfortable against the skin. POLARTEC® Thermal Pro® Stretch panels enhance freedom of movement exactly where it's needed. Being warm, comfortable, wicking and wind-resistant, the Panther is the ideal cool conditions fleece.

DETAILS

- Women's specific active cut with drop tail
- Bi-fabric, zoned construction
- Two-way reversed front zip
- Two zipped, mesh-lined hand-warmer pockets
- Underarm stretch panels

FABRIC



WIND PRO®

Main body:
POLARTEC®
Wind Pro®



THERMAL PRO®

Stretch:
POLARTEC®
Thermal Pro® Jersey

COLOURS

Berry / black
Vivid green / steel
Azure / steel
Black / black



Firefox Jacket



Breathability Water-resistance Durability Weight

PRODUCT SUMMARY

Ultra-lightweight, windproof PRIMALOFT® ECO insulated jacket.

APPROXIMATE WEIGHT

300g / 11oz: UK 12

The Firefox Jacket uses PRIMALOFT® ECO 60g/m² in the core body area and 40g/m² under the arms to provide the ideal level of insulation with low bulk exactly where it is needed. Coupled with the windproof and water resistant shell combining PERTEX® and Toray fabrics which offer both high performance and good looks, the Firefox is as functional as it is stylish. With minimal features to keep the weight low it is well suited to all day shell use on colder, dry days, as well as being versatile and packable enough to be a single insulated and mid-layer jacket on lengthier trips.

DETAILS

- Women's specific active cut
- Bi fabric zoned windproof and water-resistant shell
- Dual density zoned insulation with internal baffle anchors
- Full length two-way reversed front zip with baffle
- Two zipped hand-warmer pockets
- Elasticated self fabric cuffs
- Self-stuffs into pocket
- Single hand adjustable elasticated draw-cord hem and collar
- MONTANE® logo 3M Scotchlite™ dot on back neck

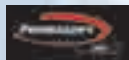
FABRIC



Outer:
PERTEX®
Microlight
Mini Rip-stop



Outer Contrast:
Toray KUDOS® XR



Interlining:
PRIMALOFT®
ECO 60g / 40g



Lining:
PEAQ® 60 DWR

COLOURS

Vivid green
Berry
Steel



Hot 09: Women's Mountain Adventure

Extreme Smock



Breathability ■■■■■■■■■■ Water-resistance ■■■■■■■■■■ Durability ■■■■■■■■■■ Weight ■■■■■■■■■■

PRODUCT SUMMARY

The definitive single layer, lightweight, soft-shell mountain top.

APPROXIMATE WEIGHT

900g / 32oz: UK 12

The Extreme Smock is a base, mid and outer layer combined. Worn over a Bionic or Mayfly base layer or next to the skin, this is a clothing system for the active woman who wants to avoid the stop-start routine associated with adjusting traditional layered clothing. Featuring a detachable hood with concealed fastening, useful zipped sleeve pocket, multiple venting options and an innovative waist belt compatible kangaroo pocket, the Extreme Smock is ideally suited to fast moving outdoor professionals or outdoor enthusiasts operating in sustained cold conditions.

DETAILS

- Women's specific active cut with drop tail
- Large pouch pocket with compass and GPS attachment ring
- Zipped hand-warmer pocket with waist belt access
- Zipped sleeve pocket
- Part elasticated hook and loop adjustable cuffs
- Water-resistant micro-fleece lined collar
- Reinforced elbows
- Glove attachment loops on forearms
- Generous neck zip with hook and loop storm baffle
- Two-way zipped, baffled side vents
- Hook and loop adjustable hem
- Removable crotch strap
- Removable, fully specified, single hand adjustable, pile-lined hood with wired peak

FABRIC



Outer:
PERTEX® 6



Reinforcement:
POLARDRI® Mini-Rip



Lining:
DRYACTIV® 3000 Pile

COLOURS

Black
Red



8 week climbing and trekking expedition to Ganesh, Himal region of Nepal

Super-Fly Jacket



Breathability Water-resistance Durability Weight

PRODUCT SUMMARY

Lightweight, super-breathable, technical waterproof jacket.

APPROXIMATE WEIGHT

415g / 15oz: UK 12

The Super-Fly is designed for fast moving outdoor activities where low weight and high breathability are key. Featuring an ergonomic hood and rubberised cuff tabs, the Super-Fly's functionality is unquestionable. This is a truly functional piece of kit for the outdoor enthusiast who values full waterproofness, superbly high levels of breathability and low weight above all else. As such, it is ideally suited for the fast moving mountaineer, lightweight backpacker or climber.

DETAILS

- Women's specific asymmetric active cut with drop tail
- Fully taped seams
- Integral, adjustable, roll-away helmet hood with reinforced wire peak and single hand operated non-whip face aperture draw-cords
- Full length front zip with hook and loop close storm baffle
- Two zipped pockets with DWR zip and storm flap
- Zipped security pocket with DWR zip
- Part elasticated hook and loop adjustable cuffs with rubberised tabs
- Intelligent design with minimal seams and no four-way seam junctions
- Single hand adjustable elasticated draw-cord rear hem
- Adjustable elasticated side draw-cords
- Reflective strips on chest, sleeves, hood and rear hem

FABRIC



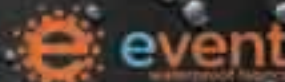
eVent® Lightweight
3 Layer

COLOURS

Black
Alpine red
Berry



Live outdoors with eVent® fabrics, the waterproof fabrics that **let the sweat out**™. Learn why people like you trust eVent fabrics in the most extreme weather conditions on the planet. Visit eventfabrics.com.



live outdoors

Venture Jacket



Breathability ■■■■■■ Water-resistance ■■■■■■ Durability ■■■■■■ Weight ■■■■■■

PRODUCT SUMMARY

Lightweight, highly breathable, super-durable waterproof jacket.

APPROXIMATE WEIGHT

430g / 15oz: UK 12

The Venture Jacket is designed to offer the lightweight and high breathability benefits of eVent® fabric coupled with super durable Dermizax® from Toray - all in a format for the female outdoor enthusiast. With two large pockets, an adjustable helmet hood and reinforcement panels this an extremely functional waterproof jacket but is styled, shaped and coloured to be refreshing and appealing. The Venture Jacket is the ideal choice for multi-day backpackers and mountain-walkers in the very worst conditions.

DETAILS

- Women's specific active cut
- Hi-tenacity nylon reinforced shoulder and hips
- Two map sized zipped chest pockets with drainage
- 3M Scotchlite™ reflective detail
- Roll-away helmet hood with wired peak and volume adjuster with single hand operated face aperture draw-cords
- Single hand adjustable elasticated draw-cord rear hem
- Two-way front zip with double storm flap
- Water resistant microfleece in front collar
- Hook and loop adjustable cuffs
- Fully taped seams

FABRIC



Main body:
eVent® Hurricane
3 Layer

Reinforcement:
Entrant Dermizax EV 3 layer

Reflective:
3M Scotchlite™

COLOURS

Steel / steel
Alpine red / alpine red
Azure / azure



Venture Pants



Breathability ■■■■■■ Water-resistance ■■■■■■ Durability ■■■■■■ Weight ■■■■■■

PRODUCT SUMMARY

Lightweight, highly breathable, super-durable waterproof pants.

APPROXIMATE WEIGHT

385g / 14oz: UK 12

Based on the extremely popular male pants of the same name, the Venture Pants were conceived to give the lightweight and high breathability benefits of eVent® fabric in a durable female pant format. With reinforced knees, seat and inner ankle, 3/4 length side zips and 3M Scotchlite™ reflective dots the Venture Pants are the ideal choice for multi-day backpackers and mountain walkers in the worst weather conditions.

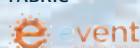
DETAILS

- Women's specific active cut with high lift crotch
- Reinforcement on knees, seat and inner ankles
- Articulated knees
- 3/4 length two-way side zips with storm flap
- Elasticated waist with lockable draw-cord
- Press stud adjustable ankles
- 3M Scotchlite™ reflective dots
- Removable elasticated adjustable braces
- Fully taped seams

COLOURS

Steel / steel

FABRIC



Main body:
eVent® Hurricane
3 Layer

Reinforcement:
Entrant Dermizax EV 3 layer

Reflective:
3M Scotchlite™



Quattro DT Jacket



Breathability Water-resistance Durability Weight

PRODUCT SUMMARY

Ultra-lightweight, waterproof and breathable multi-sports jacket.

APPROXIMATE WEIGHT

240g / 8oz: UK 12

Designed for the active woman who participates in a number of outdoor sports, the Quattro DT Jacket is lightweight and highly breathable and has a blend of features that make it ideal for everything from lightweight backpacking to commuter cycling. It is an intelligently-featured waterproof jacket that packs smaller and lighter than a grapefruit; weighing less than half that of most other 'lightweight' jackets available, yet still has the features expected of a multi-use shell such as a helmet compatible hood, contemporary, active cut and vented pockets.

DETAILS

- Women's specific asymmetric active cut with drop tail
- Removable, adjustable, helmet hood with reinforced wired peak and single hand operated non-whip face aperture draw-cords
- Fully taped seams
- Full length two-way zip with storm baffle
- Single hand operated, elasticated draw-cord rear hem
- Two large part-vent zipped pockets with storm flap
- Hook and loop adjustable collar
- Soft water-resistant fleece lined chin guard
- Hook and loop adjustable cuffs
- Reflective flashes
- Attachable stuff sac

FABRIC



ENTRANT® DT

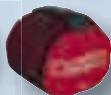
COLOURS

Fluoro yellow / steel

Cherry / steel

Vivid green / steel

Light blue / steel



Ama Dablam towers in the distance, Everest base camp awaits



Women's Fast & Lite



Fast & Lite products offer ultra-lightweight clothing solutions designed for highly active women whether walking, climbing, running or biking, where breathability and world beating low weight are paramount.



Lite-Speed H2O Jacket



Breathability Water-resistance Durability Weight

PRODUCT SUMMARY

The world's lightest weight hooded waterproof multi-activity jacket.

APPROXIMATE WEIGHT

120g / 4oz: UK 12

The Lite-Speed H2O is a very lightweight, simple, moderately waterproof and breathable women's jacket for active outdoor sports. Weighing in at 120g, less than the average eating apple, having a roll-away hood and 3M Scotchlite™ reflective flashes it's ideal for outdoor sports in inclement weather, day or night.

DETAILS

- Women's specific active cut with drop tail
- Roll-away hood with single hand adjustable elasticated face aperture draw-cords
- Full length front zip with 3M Scotchlite™ reflective trim
- Single hand adjustable elasticated draw-cord hem
- 360° 3M Scotchlite™ reflective trim
- Self fabric elasticated cuffs
- Own stuff sac

FABRIC



FREEFLOW® H2O



Reflective:
3M Scotchlite™

COLOURS

Mango / silver
Vivid green / silver
Cherry / silver



Lite-Speed Jacket



Breathability Water-resistance Durability Weight

PRODUCT SUMMARY

The lightest weight, weather-resistant, hooded jacket in the world.

APPROXIMATE WEIGHT

145g / 5oz: UK 12

The Lite-Speed Jacket is the classic lightweight weather-resistant jacket for performance outdoor sports. It features MONTANE® logo 3M Scotchlite™ reflective dots creating a 360° reflective effect and a combination of PERTEX® Microlight fabrics for complete windproofness and high breathability. Ultra-lightweight, extremely breathable and with an excellent level of weather protection relative to the overall weight, the Lite-Speed is uncompromisingly functional.

DETAILS

- Women's specific active cut with slight drop tail
- Full length semi-automatic front zip with anti-snap baffle
- Roll-away hood with single hand adjustable non-whip face aperture draw-cords
- Elasticated self fabric cuffs
- Zipped chest security / map pocket
- Single hand operated elasticated draw-cord hem
- 3M Scotchlite™ reflective dots on cuffs / shoulder
- Own stuff sac with mini karabiner
- Retail merchandising package available

FABRIC



Main Body:
PERTEX® Microlight
Mini Rip-stop



Contrast:
PERTEX® Microlight
Cross Rip-stop



Reflective:
3M Scotchlite™



COLOURS

Azure / azure Mango / mango
Red / red Berry / berry

Featherlite Marathon Jacket



Breathability ■■■■■■■■■■ Water-resistance ■■■■■■■■■■ Durability ■■■■■■■■■■ Weight ■■■■■■■■■■

PRODUCT SUMMARY

Ultra-lightweight, weather-resistant running jacket.

APPROXIMATE WEIGHT

120g / 4oz: UK 12

The Featherlite Marathon has been engineered for runners by runners, to be the lightest and most packable running specific jacket available in the world today. Whether running on city streets or mountainous fells, the Featherlite Marathon delivers high breathability and weather protection in a pack size which is smaller and lighter than the average apple. Incorporating the vital features of 360° reflective detailing, Afterburner Enhanced Breathing Panel venting and a women's-specific athletic fit, this is the ultimate ultra-lightweight running jacket.

DETAILS

- Women's sport specific active cut with pre-bent arms and slight drop tail
- Full length 3M Scotchlite™ trimmed zip with anti-snap baffle and semi-automatic locking zip puller
- MONTANE® Afterburner vented Enhanced Breathing Panels (E.B.P.)
- Self fabric elasticated cuffs
- Single hand operated, elasticated draw-cord rear hem
- 3M Scotchlite™ reflective rear-view strips
- Close fit, hi-line collar
- Own stuff sac
- Retail merchandising package available

FABRIC



Main body:
PERTEX® Microlight
Mini Rip-stop



E.B.P.:
PEAQ® Air



Reflective:
3M Scotchlite™

COLOURS

Azure / steel
Vivid green / steel
Fluoro yellow / steel
Cherry / steel



Featherlite Pants



Breathability ■■■■■■■■■■ Water-resistance ■■■■■■■■■■ Durability ■■■■■■■■■■ Weight ■■■■■■■■■■

PRODUCT SUMMARY

Ultra-lightweight weather-resistant pants.

APPROXIMATE WEIGHT

115g / 4oz: UK 12

The Featherlite Pants have been engineered to be weather resistant and highly breathable pants, yet weighing in at less than 120 grams, be no burden in the daysac. With ankle zips, reflective trimmed calf volume adjustment for running or biking and articulated knees the Featherlite Pants are a fully featured ultra-lightweight overtrouser. Aimed squarely at the fast and lite enthusiast, they are the ideal partner to the Marathon, Vélo or Lite-Speed jackets.

DETAILS

- Women's specific active cut with high lift crotch
- Elasticated waist with adjustable lockable draw-cord
- Hook and loop adjustable calf for improved fit when running or biking
- Articulated knee
- Ankle zips with semi-automatic locking puller
- 3M Scotchlite™ reflective flashes
- Own stuff sac
- Retail merchandising package available

FABRIC



Main Body:
PERTEX® Microlight
Mini Rip-stop



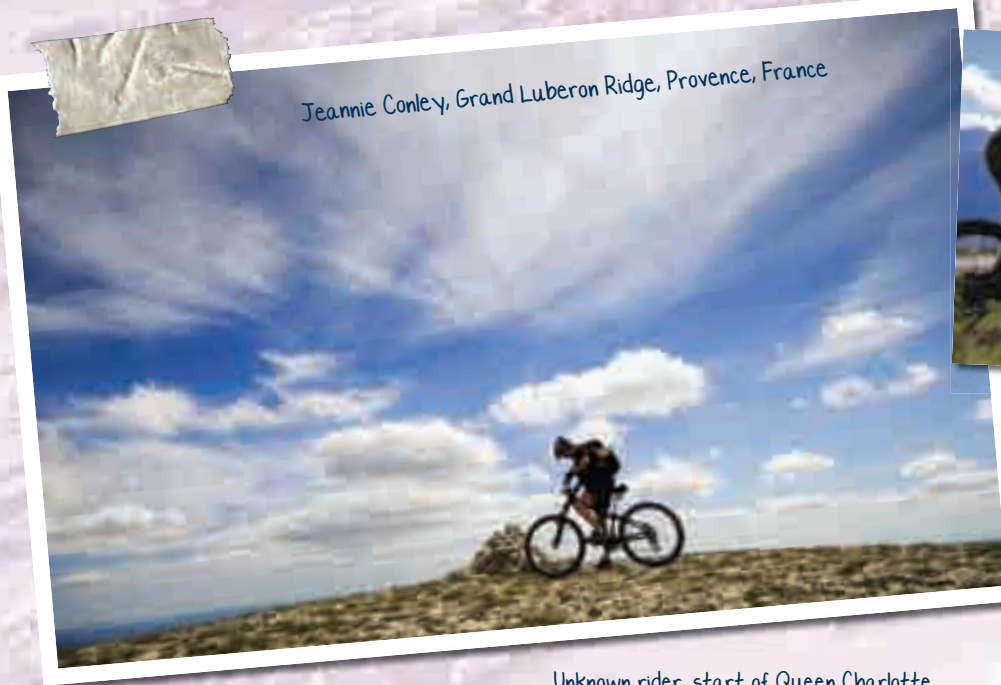
Reflective:
3M Scotchlite™

COLOURS

Black



Jeannie Conley, Grand Luberon Ridge, Provence, France



Lisa Cummings, Verbier, Switzerland



Unknown rider, start of Queen Charlotte walkway, New Zealand

Trail Tights



Breathability  Water-resistance  Durability  Weight 

PRODUCT SUMMARY

Lightweight, high stretch, 3/4 length tights.

APPROXIMATE WEIGHT

130g / 4.5oz: UK 12

Designed with active and committed runners and bikers in mind, the Trail Tights are performance legwear with a flattering cut. Using high quality stretch nylon with a soft, brushed inner face they provide moderate warmth and with close, compressive fit have real performance benefits. Carvico® 'Colorado' fabric provides support to muscles, contributing to improved blood circulation and reducing the effects of lactic acid. Featuring 3M Scotchlite™ reflective flashes, an ergonomic cut and a useful zipped rear pocket, the Trail Tights are ideal for training and competition in the all but the worst conditions.

DETAILS

- Women's specific active cut
- 3M Scotchlite™ reflective flashes
- Rear zipped pocket
- Compressive fit

FABRIC



Main Body:
CARVICO® 'Colorado'

COLOURS

Black / steel
Steel / cherry



Mayfly Shirt



Breathability ■■■■■■■■■■ Water-resistance ■■■■■■■■■■ Durability ■■■■■■■■■■ Weight ■■■■■■■■■■

PRODUCT SUMMARY

Lightweight POLARTEC® Power Dry® expedition baselayer shirt.

APPROXIMATE WEIGHT

160g / 6oz: UK 12

The Mayfly Shirt uses two different weights of POLARTEC® Power Dry® fabric to create a zoned baselayer suitable for everyday use when active in cooler conditions. POLARTEC Power Dry® Featherweight is zoned in the upper chest and underarms for high wicking, and POLARTEC® Power Dry® Midweight is deployed in the main body for additional warmth whilst also having high wicking and odour resistant properties. It is an extremely simple garment, designed for easy care, to fit well and perform brilliantly.

DETAILS

- Women's specific active cut
- Bi-fabric zoned construction
- Flatlocked stitching for comfort
- Generous reversed chest zip
- Reflective logo detail

FABRIC



POWER DRY®



POWER DRY®



Main body:
POLARTEC® Power Dry®
Midweight

High wicking:
POLARTEC® Power Dry®
Featherweight

COLOURS

Berry
Cherry
Black



Bionic T-shirt



Breathability ■■■■■■■■■■ Water-resistance ■■■■■■■■■■ Durability ■■■■■■■■■■ Weight ■■■■■■■■■■

PRODUCT SUMMARY

High wicking, lightweight, SPORTWOOL® technical base-layer.

APPROXIMATE WEIGHT

90g / 3oz: UK 12

The SPORTWOOL® Bionic base-layer combines all the well-known performance properties of both Merino wool and knitted polyester, in a flattering, active cut, flat-seam, lightweight T-shirt format. In use, the Bionic rapidly moves moisture away from the skin making for dry-to-the-touch comfort; it effectively enhances the natural cooling effects of evaporation, is odour free and provides natural UV protection and elasticity. With its simple good looks and high performance the Bionic operates perfectly as both base-layer within a performance clothing system, or on its own as a high comfort technical T-shirt.

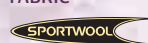
DETAILS

- Women's specific active cut
- SPORTWOOL® construction
- Flat-locked seams
- 3M Scotchlite™ reflective detail
- UPF 40+ protection

COLOURS

Black / turquoise / silver
Fluoro yellow / silver / silver
Berry / mauve / silver
Cherry / rose / silver

FABRIC



SPORTWOOL® Grid

Reflective:
3M Scotchlite™



Bionic Tank



Breathability Water-resistance Durability Weight

PRODUCT SUMMARY

High wicking, technical sleeveless top.

APPROXIMATE WEIGHT

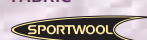
85g / 3oz: UK 12

The Bionic Tank is the ultimate in simplicity, comfort and breathability for active 3-season use. SPORTWOOL® and strategically zoned panels of DRYACTIV® Express work together to actively manage moisture and maintain a comfortable micro-climate as well as providing modest stretch. Coupled with a flattering, shaped active cut and minimal flat-locked seams this is an ideal top for all aerobic outdoor sports during the warmer periods of the year.

DETAILS

- Women's specific active cut with shaped bust
- Bi-fabric zoned construction
- Minimal flat-locked seams
- UPF 40+ protection

FABRIC



Main:
SPORTWOOL® Grid



Stretch:
DRYACTIV® Express

COLOURS

Black / black
Cherry / cherry
Berry / berry



Featherlite Vélo Jacket



Breathability Water-resistance Durability Weight

PRODUCT SUMMARY

Ultra-lightweight, weather-resistant cycling jacket.

APPROXIMATE WEIGHT

120g / 4oz: UK 12

The Featherlite Vélo has been engineered to be the world's lightest and most packable women's cycle specific shell jacket. Designed for the cyclist who rides fast and light and demands high breathability in a pack size smaller and lighter than the average inner tube, the Featherlite Vélo is an essential part of the cyclist's kit that will never be left at home. Incorporating the vital features of 360° reflective detailing, Afterburner E.B.P. venting and an athletic women's bike fit, this is the ultimate ultra-lightweight cycling jacket.

DETAILS

- Women's sport specific active cut with pre-bent, extra-length arms and extended drop tail
- Full length 3M Scotchlite™ trimmed zip with anti-snap baffle
- MONTANE® Afterburner vents and Enhanced Breathing Panels (E.B.P.)
- Self fabric elasticated cuffs and hem
- 3M Scotchlite™ reflective rear-view strips
- Close fit, hi-line collar
- Attachable stuff sac
- Retail merchandising package available

COLOURS

Alpine red / steel
Fluoro yellow / steel
Berry / steel

FABRIC



Main body:
PERTEX® Microlight
Mini Rip-stop



E.B.P.:
PEAQ® Air



Reflective:
3M Scotchlite™



Back view





Products in the new Live Lite range are not only functional garments ideal for everyday life, outdoor adventures and travel throughout the year but are **Recycled and Recyclable**.





Our growing awareness...

...of the environmental threats facing the outdoor environments we love to enjoy so much has led MONTANE® to make a positive financial commitment to protecting some of the most vulnerable areas of the planet.

Through agreeing to donate a percentage of net sales revenue from the Live Lite range of products, MONTANE® has become an official sponsor of the World Land Trust.

Find out more at www.worldlandtrust.org



The World Land Trust is an international conservation organisation that takes direct action to save rainforests and other biologically important lands — it is purchased, acre by acre.

Since 1989, with support from public donations, company sponsorship, government and foundation grants, the World Land Trust has helped protect over 350,000 acres of steaming tropical forest, colourful coral reefs, arid coastal steppe, and ancient beech woodland.



Jamie above Blea Tarn, English Lake District

These deer are from the oldest herd in Britain!



Sunrise from Mardale Ill Bell summit

www.trekkingbritain.com

Future Jacket



Breathability Water-resistance Durability Weight

PRODUCT SUMMARY

Hi loft, recycled and recyclable fleece jacket.

APPROXIMATE WEIGHT

375g / 13oz: UK 12

The Future Jacket uses a 100% recycled polyester fleece fabric with a knitted outer and a high loft brushed inner face for sleek looks and impressive thermal performance from the lightweight fabric. Featuring flat-locked seams throughout, two zipped hand pockets and draw-cord adjustable hem, the Future Jacket has the essential features for active outdoor use or more general day to day outdoor use. As with all other MONTANE® Live Lite products it can be returned to MONTANE® at the end of its life for complete recycling.

DETAILS

- Active cut
- Full length front zip with semi-automatic locking puller
- Two zipped mesh-lined hand-warmer pockets
- Single hand operated, elasticated draw-cord hem
- Trimmed with ECO cotton feel fabric
- Recyclable through ECO-CIRCLE™

FABRIC



ECO Hi Loft Fleece



COLOURS

Blue mist / rutabage
Vivid green / rutabage
Berry / rutabage



Element Jacket



Breathability Water-resistance Durability Weight

PRODUCT SUMMARY

Ultra-lightweight, weather-resistant recycled and recyclable jacket.

APPROXIMATE WEIGHT

170g / 6oz: UK 12

The Element Jacket uses a combination of PERTEX® Quantum and Microlight ECO fabrics meaning that it is made from more than 98% recycled fabric, ultra-lightweight and contemporarily styled with a combination of plain weave and random rip fabrics. It features 2 zipped hand pockets, a roll-away hood with shaped peak and internal drawcords. It conveniently packs into its own pocket or stuff sac which along with the low weight means that this is the ideal garment for complete wind protection and modest protection from the rain, whether on a year long global adventure or a relaxed walk in changeable weather. As with all the other products in the Live Lite range, it can be returned to MONTANE® at the end of its life and fully recycled.

DETAILS

- Active cut
- Full length, semi-automatic front zip with anti-snap baffle
- Roll-away, foam peaked, lined hood with concealed single hand adjustable face aperture draw-cords
- Two, map-sized, zipped chest pockets
- Single hand operated, elasticated draw-cord hem
- Hook and loop adjustable cuffs
- Own stuff sac
- Recyclable through ECO-CIRCLE™

FABRIC



PERTEX® Quantum ECO
Mini Rip



PERTEX® Microlight ECO
Random Rip



COLOURS

Vivid green / rutabage
Steel / rutabage
Rutabage / rutabage



Yesterday Today Tomorrow



By combining post consumer waste such as plastic bottles and carrier bags with organic cotton, Teijin Fibers are creating the future generation of recycled and recyclable outdoor performance fabrics.

**ECO CIRCLE™
FIBERS**
In association with
TEIJIN FIBERS LIMITED

Bottle Pants



Breathability Water-resistance Durability Weight

PRODUCT SUMMARY

Do anything, performance recycled and recyclable pants.

APPROXIMATE WEIGHT

350g / 12oz: UK 12

The Bottle Pants, so named because a percentage of the recycled material used to manufacture the fabric is post consumer waste such as plastic bottles, are comfortable, well cut pants for light hiking or simply spending a more relaxed day outdoors. Combining recycled polyester with a small percentage of organic cotton these pants are both water resistant and quick drying as well as exceptionally comfortable. Featuring double fabric on the knee along with four pockets, these pants are functional and simply styled. As with all other MONTANE® Live Lite products they can be returned at the end of their life for complete recycling.

DETAILS

- Active cut
- Two front hip pockets
- One rear storage pocket
- One rear zipped security pocket
- Double layer, articulated knees
- Contrast stitching detail
- Belt loops
- Button / zip fly with internal elasticated waist adjuster
- Recyclable through ECO-CIRCLE™

FABRIC



ECO Polycanvas

COLOURS

Chestnut / rutabage
Steel / rutabage
Rutabage / rutabage



Perpetual T-shirt



Breathability Water-resistance Durability Weight

PRODUCT SUMMARY

Performance recycled and recyclable wicking T-shirt.

APPROXIMATE WEIGHT

125g / 4oz: UK 12

The Perpetual T-shirt uses a high wicking 100% recycled polyester fabric for effective moisture management and comfort when travelling and trekking across the globe. Styled to blend comfortably into everyday life with a shallow V neck, cap sleeve and a flattering shape. Available in a range of contemporary colours the Perpetual T-shirt is a simple but effective garment, which offers a double benefit to the environment because when it eventually wears out it can be returned to MONTANE® and simply be recycled into another one.

DETAILS

- Active cut
- Contrast top stitching detail
- Contemporary style lines
- Recyclable through ECO-CIRCLE™

COLOURS

Citronelle
Cherry
Steel

FABRIC



ECO Cotton feel



Product Comparison Table

For further information please contact MONTANE®

Each product has been rated against the four key performance criteria of Breathability, Water-resistance, Weight and Durability. For each criterion a rating between 0 and 10.0 has been calculated relative to other MONTANE® products where 0 is Low and 10.0 is High.

Product name	Breathability	Water-resistance	Weight	Durability
Terra Trail Shorts	9.5	7.5	2.5	7.5
Terra Shorts	9.5	7.5	2.5	6.5
Terra Lite Pants	9.5	7.5	3.0	6.5
Terra Pants	9.5	7.5	3.0	7.5
Terra Converts	9.5	7.5	3.5	7.5
Balance Shirt	10.0	3.0	2.5	5.0
Dryx Jacket	10.0	3.0	2.5	5.0
Pulse Shirt	10.0	3.0	3.0	3.0
Jaguar Jacket	10.0	3.0	6.0	5.0
Prism 2.0 Jacket	9.5	8.0	4.0	6.0
Flux Jacket	9.5	8.0	5.0	6.0
Extreme Smock	9.5	8.0	8.5	9.0
Extreme Jacket	9.5	8.0	8.0	9.0
Terra Equilibrium Pants	10.0	7.0	4.5	6.5
Dynamo Jacket	10.0	7.0	3.5	7.0
Scarab Jacket	10.0	7.0	5.0	7.0
Puma 2.0 Jacket	10.0	7.0	6.0	7.0
Sabretooth Jacket	10.0	7.0	6.0	7.0
Super-Fly XT Jacket	9.0	10.0	6.0	9.0
eVent Halo Stretch Jacket	9.0	10.0	3.5	7.0
Super-Fly Jacket	9.0	10.0	4.5	6.0
Spectra Pants	9.0	10.0	5.0	7.0
Venture Jacket	9.0	10.0	4.5	9.0
Venture Pants	9.0	10.0	4.0	9.0
Atomic DT Jacket	8.0	9.5	2.5	5.0
Atomic DT Pants	8.0	9.5	1.5	5.0
Lite-Speed H2O Jacket	7.0	9.0	1.5	6.0
Lite-Speed Jacket	9.5	8.0	1.5	6.0
Slipstream Jacket	9.5	8.0	0.5	4.0
Featherlite Marathon Jacket	9.5	8.0	1.0	6.0
Featherlite Smock	9.5	8.0	1.0	6.0
Featherlite Pants	9.5	8.0	1.0	6.0
Trail Tights	10.0	1.0	2.0	5.0
Sonic Short	9.5	7.5	1.5	7.5
Aero Cap	9.5	5.5	0.5	6.0
Dragonfly Shirt	10.0	1.0	2.0	3.0
Terra T-shirt	10.0	1.0	1.5	3.0
Bionic T-shirt	10.0	1.0	1.0	3.0
Stormrider Jacket	9.0	10.0	3.0	6.0
Velocity DT Jacket	8.0	9.5	2.0	5.0
Featherlite Vélo H2O Jacket	7.0	9.0	1.0	6.0
Sportwool Torque Jersey	10.0	1.0	3.0	3.0
Cadence Jersey	10.0	1.0	2.5	3.0
Featherlite Vélo Jacket	9.5	8.0	1.0	6.0
Pursuit Ergo Shorts	10.0	1.0	1.5	5.0
Horizon Jacket	10.0	3.0	4.5	5.0
Filament Jacket	9.5	8.0	2.0	5.5
Bag Pants	9.5	7.0	4.0	7.0
Infinity T-shirt	10.0	1.0	2.0	3.0
Terra Stretch Shorts	9.5	7.5	2.0	8.5
Terra Stretch Pants	9.5	7.5	2.5	8.5
Terra Pants	9.5	7.5	3.0	7.5
Dynamo Jacket	10.0	7.0	3.0	7.0
Gazelle Jacket	10.0	3.0	2.5	5.0
Liberty Jacket	10.0	3.0	3.0	5.0
Panther Jacket	10.0	3.0	5.5	5.0
Firefox Jacket	9.5	8.0	3.0	6.0
Extreme Smock	9.5	8.0	9.0	9.0
Super-Fly Jacket	9.0	10.0	4.0	6.0
Venture Jacket	9.0	10.0	4.5	9.0
Venture Pants	9.0	10.0	4.0	9.0
Quattro DT Jacket	8.0	9.5	2.5	5.0
Lite-Speed H2O Jacket	7.0	9.0	1.0	6.0
Lite-Speed Jacket	9.5	8.0	1.5	6.0
Featherlite Marathon Jacket	9.5	8.0	1.0	6.0
Featherlite Pants	9.5	8.0	1.0	6.0
Trail Tights	10.0	1.0	1.5	5.0
Mayfly Shirt	10.0	1.0	1.5	3.0
Bionic T-shirt	10.0	1.0	1.0	3.0
Bionic Tank	10.0	1.0	1.0	3.0
Featherlite Vélo Jacket	9.5	8.0	1.0	6.0
Future Jacket	10.0	3.0	3.5	5.0
Element Jacket	9.5	8.0	1.5	5.5
Bottle Pants	9.5	7.0	3.5	7.0
Perpetual T-shirt	10.0	1.0	1.0	3.0

Key

0 = Plastic bag
10 = Open mesh

0 = Sponge
10 = Plastic bag

0 = Feather
10 = Kilo weight

0 = Silk
10 = Steel

ECO Cotton feel



- 100% recycled Polyester
- Fibres supplied by Teijin Fibers Limited as part of the ECO-CIRCLE™
- Post consumer and post industrial waste (typically fibre products such as workwear) used as source material
- Cotton feel, heathered finish
- Treated to be Anti-Microbial
- Fully recyclable as part of the ECO-CIRCLE™

ECO Polycanvas



- 90% recycled Polyester
- Fibres supplied by Teijin Fibers Limited as part of the ECO-CIRCLE™
- Post consumer plastic waste (PET bottles and carrier bags) used as source material
- 10% Organic Cotton
- Treated to be Durably Water Resistant
- Fully recyclable as part of the ECO-CIRCLE™

ECO Hi Loft Fleece



- 100% recycled Polyester
- Fibres supplied by Teijin Fibers Limited as part of the ECO-CIRCLE™
- Post consumer and post industrial waste (typically fibre products such as workwear) used as source material
- Brushed fibres on inner face to increase loft
- Fully recyclable as part of the ECO-CIRCLE™

POLARTEC® Wind Pro® with Hardface® Technology



- 299g/m² 87% RECYCLED Polyester / 13 Spandex® knit
- Textured Hardface® Technology provides water resistance and increased durability
- Warmth with minimal weight and 4 times more wind resistant than traditional fleece
- Highly breathable

ECO-CIRCLE™



- The world's first closed loop recycling system for Polyester fabrics
- Versus virgin Polyester production:
- CO2 reduced by 77%
 - Energy consumption reduced by 84%
 - Oil consumption reduced by 100%

PERTEX® Quantum ECO Mini Rip



- 44g/m² 100% recycled Polyester.
- Fibres supplied by Teijin Fibers Limited as part of the ECO-CIRCLE™
- Post consumer and post industrial waste (typically fibre products such as workwear) used as source material
- Fully recyclable as part of the ECO-CIRCLE™

PERTEX® Microlight ECO Random Rip



- 47g/m² 90% recycled Polyester
- Fibres supplied by Teijin Fibers Limited as part of the ECO-CIRCLE™
- Post consumer and post industrial waste (typically fibre products such as workwear) used as source material
- 10% virgin Polyester (used for Rip-stop)
- Fully recyclable as part of the ECO-CIRCLE™

POLARTEC® Classic 100®



- 100% recycled Polyester
- 213g/m² Polyester knit, brushed both sides
- High warmth to weight ratio
- Dries quickly
- Soft feel for comfort against skin

PRIMALOFT ECO



- 60g/m² high performance synthetic mid-loft insulation
- 40g/m² high performance synthetic mid loft insulation
- Warm when wet and fast-drying
- Wind resistant and water repellent
- Compresses like down
- Fibres produced from post consumer and post industrial plastic waste
- Minimum of 50% recycled content

eVent® Fabric Technology Lightweight 3 Layer



- More breathable than a cotton T-shirt
- 122g/m² high tenacity soft textured Nylon mini rip-stop
- Waterproof to a minimum of 30,000mm hydrostatic head with a minimum MVTR of 27,000g/m²/24hrs
- Laminated to oleophobic, air permeable hydrophobic ePTFE and Nylon Tricot
- eVent® fabric is an advanced waterproof and breathable barrier that uses Dry System Technology™ to dramatically reduce interior clamminess while providing unparalleled levels of breathability and user comfort

eVent® Fabric Technology Lightweight Abrasion 3 Layer



- More breathable than a cotton T-shirt
- 178g/m² High Tenacity Nylon
- Waterproof to a minimum of 30,000mm hydrostatic head with a minimum MVTR of 12000g/m²/24hrs
- Laminated to oleophobic, air permeable hydrophobic ePTFE and Nylon Tricot
- eVent® fabric is an advanced waterproof and breathable barrier that uses Dry System Technology™ to dramatically reduce interior clamminess while providing unparalleled levels of breathability and user comfort

eVent® Fabric Technology Super Lightweight 3 Layer



- More breathable than a cotton T-shirt
- 85g/m² super lightweight, 20 denier Nylon 66 mini rip-stop
- Waterproof to a minimum of 30,000mm of hydrostatic head with a minimum MVTR of 17,000g/m²/24hrs
- Laminated to oleophobic, air permeable hydrophobic ePTFE
- eVent® fabric is an advanced waterproof and breathable barrier that uses Dry System Technology™ to dramatically reduce interior clamminess while providing unparalleled levels of breathability and user comfort

eVent® Fabric Technology Hurricane 3 Layer



- More breathable than a cotton T-shirt
- 125g/m² high tenacity soft textured Nylon 66 mini rip-stop
- Waterproof to a minimum of 30,000mm of hydrostatic head with a minimum MVTR of 12,000g/m²/24hrs
- Laminated to oleophobic, air permeable hydrophobic ePTFE and Nylon Tricot
- eVent® fabric is an advanced waterproof and breathable barrier that uses Dry System Technology™ to dramatically reduce interior clamminess while providing unparalleled levels of breathability and user comfort

SPORTWOOL® Energy



- Polyester / Merino wool blend (62/38)
- Manages moisture in vapour and liquid form
- Rapid vapour processing makes you feel cooler quicker
- Efficient wicking of liquid makes you feel more comfortable
- Naturally UV protective

SPORTWOOL® Grid



- Polyester / Merino wool blend (77/23)
- Manages moisture in vapour and liquid form
- Rapid vapour processing makes you feel cooler quicker
- Efficient wicking of liquid makes you feel more comfortable
- Naturally UV protective

SPORTWOOL® Synchro



- Polyester / Merino wool blend (60/40)
- Manages moisture in vapour and liquid form
- Rapid vapour processing makes you feel cooler quicker
- Efficient wicking of liquid makes you feel more comfortable
- Naturally UV protective

Cotton-feel TACTEL®



- 110g/m² lightweight nylon TACTEL® plain weave with 'cotton-feel'
- Breathable to 98%
- Water repellent with a spray rating of grade 4
- Dense weave gives a wind resistance of 10ft³/min

TACTEL® Dynamic



- 190g/m² knit fabric using TACTEL®, CORDURA® and LYCRA® yarns
- The cotton-feel Nylon TACTEL® resists moisture absorption and provides next to skin comfort
- The CORDURA® adds abrasion resistance
- LYCRA® yarns give the fabric four way stretch properties

PERTEX® 6



- 69g/m² lightweight Nylon plain weave
- Breathable to 98%
- Dense weave gives a wind resistance of 1ft³/min
- Water repellent with a spray rating of grade 4

PERTEX® Microlight - Mini Rip-stop



- 52g/m² very lightweight Nylon 6.6 rip-stop weave
- Breathable to 98%
- Dense weave gives a wind resistance of 5ft³/min
- Water repellent with a spray rating of grade 5

PERTEX® Equilibrium Stretch



- 146g/m² Nylon 6.6 / LYCRA®
- Unique 'denier gradient' structure creates permanent capillary action where sweat and rain always travels to the outer surface
- Wind-resistant and water repellent, shedding light rain and snow
- Soft, natural feel, but it is impressively durable

PERTEX® Microlight - Rip-stop



- 49g/m² very lightweight Nylon 6.6 rip-stop weave
- Breathable to 98%
- Dense weave gives a wind resistance of 5ft³/min
- Water repellent with a spray rating of grade 5

PERTEX® Equilibrium Ultra Light



- 78g/m² Nylon Rip-Stop
- Unique 'denier gradient' structure creates permanent capillary action where sweat and rain always travels to the outer surface
- Wind-resistant and water repellent, shedding light rain and snow

PERTEX® Microlight - Cross Rip-stop



- 55g/m² very lightweight Nylon 6.6 rip-stop weave
- Breathable to 98%
- Dense weave gives a wind resistance of 5ft³/min
- Water repellent with a spray rating of grade 5

PERTEX® Quantum Core



- 32g/m² ultra-lightweight Nylon 6 plain weave
- Breathable to 98%
- Dense weave gives a wind resistance of 1ft³/min
- Water repellent with a spray rating of grade 4

PERTEX® Equilibrium



- 115g/m² Nylon Rip-Stop
- Unique 'denier gradient' structure creates permanent capillary action where sweat and rain always travels to the outer surface
- Wind-resistant and water repellent, shedding light rain and snow

PERTEX® Quantum Rip-stop



- 29g/m² ultra-lightweight Nylon 6 rip-stop weave
- Breathable to 98%
- Dense weave gives a wind resistance of 1ft³/min
- Water repellent with a spray rating of grade 4

FREEFLOW® NailHead 3 Layer



- 160g/m² nylon with NailHead durable weave
- Waterproof to a minimum of 20,000mm hydrostatic head with a minimum MVTR of 10,000g/m²/24hrs
- 3 layer construction with Tricot lining

FREEFLOW® H2O



- 43g/m² super-lightweight coated 20 denier Nylon mini rip-stop
- Waterproof to a minimum of 1300mm and breathable to a minimum MVTR of 6000g/m²/24hrs

FREEFLOW® Ballistic



- 16% Aramid, 78% Polyamide, 6% Polyurethane
- High tensile strength and abrasion resistance

FREEFLOW® Stretch



- 3 layer PU laminate stretch Nylon
- Enhances movement and abrasion resistance

PEAQ® Micro



- 49g/m² extremely lightweight Nylon 6 rip-stop
- Breathable to 92%
- Dense weave gives a wind resistance of 0.3cm²/sec/cm²
- Water repellent with a spray rating of grade 4

PEAQ® 60 DWR



- 60g/m² 100% Polyester
- Treated to be Durably Water Repellent
- Exceptional comfort next to skin

PEAQ® Air



- Lightweight nylon rip-stop
- Water repellent and wind resistant
- Extremely breathable
- Ideally suited for areas where maximum breathability is key such as Enhanced Breathing Panels (E.B.P.)

DRYACTIV® Suede



- 100g/m² 100% Polyester Tricot with brushed face
- Durable wicking finish by 3M Scotchguard®
- Draws moisture away from the skin
- Does not affect breathability

DRYACTIV® Express



- 160g/m² 100% Polyester
- Mechanical stretch properties
- Moves liquid sweat through high volume capillary action

DRYACTIV® 3000



- Polyester fibre pile
- Excellent inherent wicking
- High warmth to weight ratio

DRYACTIV® Mesh



- 130g/m² 100% Polyester
- Durable wicking finish by 3M Scotchguard®
- Draws moisture away from the skin
- Does not affect breathability

DRYACTIV® Thermal Mesh



- 100% Polyester brushed mesh
- Durable wicking finish by 3M Scotchguard®
- Draws moisture away from the skin
- Does not affect breathability

POLARDRI® Mini Rip



- Coated high tenacity textured Nylon rip-stop
- 85% breathable
- Water repellent
- Suited to applications where durability and breathability are key

POLARTEC® Classic Micro



- 259g/m² 100% Polyester knit, brushed both sides
- Warmth with minimal weight
- Highly breathable and quick drying
- Comfortable next to skin

POLARTEC® Classic Micro Grid Jersey



- 175g/m² 100% Polyester Single sided velour grid / jersey
- Warmth with minimal weight
- Highly breathable and quick drying
- Comfortable next to skin

POLARTEC® Power Dry®



- 194g/m² Polyester knit with Spandex yarns and brushed inner face
- Excellent four-way stretch
- Capillary action moisture movement away from the skin
- Highly breathable
- Dries quickly
- Soft feel for comfort against the skin

POLARTEC® Wind Pro®



- 438g/m² Polyester knit, brushed outer face and high pile inner face
- Phenomenal warmth to weight ratio
- Water repellent outer face
- Highly breathable
- Dries quickly
- Soft feel for comfort against the skin

POLARTEC® Classic 200®



- 262g/m² 100% Polyester Double Velour Tweed
- Warmth with minimal weight
- Highly breathable and quick drying
- Comfortable next to skin

POLARTEC® Thermal Pro® Jersey



- 213g/m² 100% Polyester Jersey / Velour
- Provides mechanical stretch and warmth with minimal weight
- Highly breathable and quick drying

POLARTEC® Thermal Pro® with Hardface® Technology



- 335g/m² 100% Polyester Hardface Jersey / Pebbled Velour with DWR
- Textured surface provides water resistance and increased durability
- Highly breathable and quick drying

POLARTEC® Power Dry® Featherweight



- 125g/m² 100% Polyester
- Bi-component construction wicks sweat efficiently
- Highly breathable and quick drying

POLARTEC® Power Dry® Midweight



- 183g/m² 100% Polyester
- Treated to be odour resistant
- Bi-component construction wicks sweat efficiently
- Highly breathable and quick drying

POLARTEC® Odor Resistant



- Pure silver micro-encapsulated within the yarn
- Inhibits growth of odour causing bacteria
- Permanent application, will not wash out

POLARTEC® Hardface® Technology



- Surface fusion polymer application
- Increases abrasion resistance
- Enhances durable water repellency
- No reduction in breathability

CARVICO® 'Alaska'



- 222g/m² 57% Polyamide / 23% Polyester / 20% Elastane
- Brushed inner face for moderate insulation
- Meets Oeko-Tex standards for 'Confidence in Textiles', a reliable product label for consumers who specifically aim to buy textiles that are harmless to health

CARVICO® 'Atlanta'



- Durable nylon with 22% Xtra Life LYCRA® for two-way stretch
- Provides correct muscle compression to reduce distribution of lactic acid, reducing fatigue
- UPF 40+ protection
- Meets Oeko-Tex standards for 'Confidence in Textiles', a reliable product label for consumers who specifically aim to buy textiles that are harmless to health

CARVICO® 'Colorado'



- 190g/m² 80% Polyamide / 20% Elastane
- Brushed inner face for moderate insulation
- Meets Oeko-Tex standards for 'Confidence in Textiles', a reliable product label for consumers who specifically aim to buy textiles that are harmless to health

TMF PADS - PROFESSIONAL



- Made in Italy
- Multi-level pad with 4, 8 and 10mm foam
- Eschler developed top fabric
- Seamless construction

CORDURA® Mini-Rip



- 160g/m² high tenacity Nylon CORDURA® rip-stop
- Breathable to 98%
- Excellent tear strength and abrasion resistance
- Dense weave gives wind resistance of 9ft³/min
- Water repellent

ENTRANT DT



- 66g/m² 2.5 layer 15 denier 100% Nylon with internal 'mesh' print
- Waterproof to a minimum of 10,000mm hydrostatic head and with a minimum MVTR of 8,000g/m²/24hrs

Toray Super Lightweight Dermizax EV Stretch 3 layer



- 107g/m² 100% Nylon
- Stretch tricot
- Treated with Kudos XR high performance DWR
- Waterproof to a minimum of 20,000mm hydrostatic head with a minimum MVTR of 20,000g/m²/24hrs

Toray Dermizax EV 3 Layer



- 160g/m² 33% Cationic Polyester / 67% Nylon, dobby weave, 3 layer PU laminate
- Waterproof to a minimum of 20,000mm hydrostatic head with a minimum MVTR of 20,000g/m²/24hrs

Toray KUDOS XR



- 53g/m² 100% Nylon random rip
- Features super durable water repellent treatment

Size Chart

For further information please contact MONTANE®

Male	XS	S	M	L	XL	XXL
Chest	92cm 36in	97cm 38in	102cm 40in	107cm 42in	114cm 45in	122cm 48in
Waist	71cm 28in	76cm 30in	81cm 32in	86cm 34in	94cm 37in	102cm 40in
Inside leg	74cm 29in	76cm 30in	78cm 31in	81cm 32in	84cm 33in	86cm 34in
Inside leg short	70cm 27.5in	72.5cm 28.5in	75cm 29.5in	77.5cm 30.5in	80cm 31.5in	82.5cm 32.5in

Female UK	8	10	12	14	16	18
USA	6	8	10	12	14	16
EUR	36	38	40	42	44	46
Bust	82 – 86cm 33 – 34in	86 – 90cm 34 – 36in	90 – 94cm 36 – 37in	94 – 98cm 37 – 38in	98 – 102cm 38 – 40in	102 – 106cm 40 – 42in
Waist	64 – 68cm 25 – 27in	68 – 72cm 27 – 28in	72 – 76cm 28 – 30in	76 – 80cm 30 – 31in	80 – 84cm 31 – 33in	84 – 88cm 33 – 35in
Hip	90 – 94cm 35 – 37in	94 – 98cm 37 – 38in	98 – 102cm 38 – 40in	102 – 106cm 40 – 42in	106 – 110cm 42 – 43in	110 – 114cm 43 – 45in
Inside leg	79cm 31in	80cm 31.5in	81cm 32in	83cm 32.5in	84cm 33in	84cm 33in
Inside leg short	74cm 29in	75cm 29.5in	76cm 30in	77cm 30.5in	79cm 31in	79cm 31in

Please note:

XS and XXL are available for forward ordered products only.

Care, Maintenance & Warranty

MONTANE®

All MONTANE® clothing will benefit from proper and timely care and maintenance. Clean garments will deliver greater performance. All garments have a care label with detailed instructions.

eVent®

To clean eVent® garments, first pretreat any really dirty areas with neat biological liquid detergent without built in conditioner. If stained then use a very soft brush to gently scrub the stains off. Close all fastenings and wash at 40°C with biological liquid detergent. At the end of the cycle, give the garment an extra rinse to remove all traces of detergent residue. Let the garment drip dry and avoiding seams, zips and surface embellishment, iron on 2 dot setting to fully reactivate the DWR.

To reproof eVent® garments wash in Nikwax TX direct or equivalent, following the product instructions.

PERTEX®

To best preserve the water repellency of PERTEX® garments wash with Nikwax Tech Wash, pure soap flakes or equivalent and tumble dry on a cool setting. After prolonged use or repeated washing restore the water shedding properties with Nikwax TX Direct Spray or equivalent.

Warranty

MONTANE® clothing is engineered to provide high levels of weather protection, breathability and all round performance in a package that is as low weight and low bulk as possible. To best preserve these properties and extend the life of the garment, read and follow the care instructions on the label inside each garment. Please do not hesitate to contact MONTANE® if further information is required. All MONTANE® products are guaranteed against faults in workmanship and materials.

Register your guarantee at www.montane.co.uk



AUSTRALIA & NEW ZEALAND

Wildside Design Pty Ltd,
Tim Campbell
Tel: +613 5282 5654
Email: tim@wildside.com.au

BELGIUM

Montaneous Pearl
Alain Vranken
Tel: +32 4739 84751
Email: alain.vranken1@telenet.be

BULGARIA

Namaste,
Borislav Dimitrov
Tel: +359 2866 9367
Email: namaste@bglink.net

CANADA

Kempter Marketing Inc.
Paul Harris
Tel: +1 514 633 8113
Email: paul@kmi.ca

CYPRUS

Lella Kentonis Investment Co.,
Nick Kentonis
Tel: +357 2231 2262
Email: lkentoni@spidernet.com.cy

CZECH REPUBLIC

Rocksport
Michal Gumenny
Tel: +420 483 300 736
Email: Rocksport-distri@email.cz

DENMARK

Claus Møllgaard
AV Expeditions Udstyr
Tel: +45 86511535
Email: claus@av-exp.dk

EIRE & N. IRELAND

Chimney Rock Sales,
Bryan Knox
Tel: +44 7921 709724
Email: bryan@chimneyrock.co.uk

ESTONIA

Matkasport,
Tarmo Mere
Tel: +372 6813130
Email: tarmo.mere@matkasport.ee

GERMANY

Sport & Mode Handelsagentur,
Peter Schmidt
Tel: +49 7305 21116
Email: agenturschmidt@aol.com

GREECE

Wildside Sports
Mike Kidonis
Tel: +302310 279165
Email: wildside@otenet.gr

HONG KONG

Allied Link,
Ryan Cheng
Tel: +852 2390 0020
Email: info@alink.com.hk

ISRAEL

Masai Ltd,
Yaniv Laniado
Tel: +972 52391 0882
Email: yanlan@zahav.net.il

ITALY

Ride and Bike Outdoor
Moreno Andreotti
Tel: +39 4744 14134
Email: info@rideandbike.it

JAPAN

Griffin Int Ltd,
David Morrall
Tel: +81 3 5754 3556
Email: info@griffin.cx

KOREA

O.D. Camp
Ken Kang
Tel: +82 24494467
Email: ken@odcamp.co.kr

International Distributors

For further information please contact MONTANE®



NETHERLANDS

Van Assendelft Hollander Bogaert
Tel: +31 (0) 76 524 4411
Email: info@vahb.nl

NORWAY

MONTANE Norge AS,
Bjorn Jacobsen
Tel: +47 221 64485
Email: jacobsen@montane.no

POLAND

Grappa Spolka z.o.o.
Wiktór Lewandowski
Tel: + 48 60720 0905
Email: grappa@grappa.pl

PORTUGAL

Caminhos da Natureza
Antonio Gavinho
Tel: + 351 2124 26674
agavinho@caminhosdanatureza.pt

SLOVAKIA

Profi Haus s.r.o.,
Radoslav Markech
Tel: + 421 948 111 333
Email: regatta@regatta.sk

SLOVENIA

Alpeaktiv d.o.o.,
Marusa Skopac
Tel: +386 41 751 751
Email: marusa.skopac@siol.net

SPAIN

Deerfoot Sport S.L.,
Xavi Brunet
Tel: +34 9348 02467
Email: info@deerfootssport.com

SWITZERLAND

MONTANE UK,
Jake Daxat
Tel: +44 1670 522300
Email: info@montane.co.uk

TAIWAN

Outdoor Active Int'l Co. Ltd
John Ling
Tel: + 886 22793 8616
Email: johnling@easy-outdoor.com.tw

UK

MONTANE UK,
Jake Daxat
Tel: +44 1670 522300
Email: info@montane.co.uk

UK - BIKE ONLY

Extra (UK) Ltd
Tel: +44 1933 672170
Email: mailbox@extrauk.co.uk

UKRAINE

MONTANE Ukraine Ltd.
Tel: +380-50-310-6411
Email: info@montane.com.ua

USA

MONTANE UK,
Jake Daxat
Tel: +44 1670 522300
Email: info@montane.co.uk

Range Summary

For further information please contact MONTANE®



Aero Cap



Atomic DT Jacket



Atomic DT Pants



Bag Pants



Balance Shirt



Bionic T-shirt



Dragonfly Shirt



Dynamo Jacket



eVent Halo
Stretch Jacket



Extreme Jacket



Extreme Smock



Featherlite Marathon
Jacket



Featherlite Pants



Featherlite Smock



Filament Jacket



Flux Jacket



Horizon Jacket



Infinity T-shirt



Jaguar Jacket



Lite-Speed H2O
Jacket



Lite-Speed Jacket



Oryx Jacket



Prism 2.0 Jacket



Pulse Shirt



Puma 2.0 Jacket



Sabretooth Jacket



Scarab Jacket



Slipstream Jacket



Sonic Shorts



Super-Fly Jacket



Super-Fly XT Jacket



Terra Converts



Terra Equilibrium
Pants



Terra Lite Pants



Terra Pants



Terra Shorts



Terra T-shirt



Terra Trail Shorts



Trail Tights



Venture Jacket



Venture Pants

Range Summary

For further information please contact MONTANE®



Atomic DT Pants



Bionic T-shirt



Cadence Jersey



Dragonfly Shirt



Dynamo Jacket



Featherlite Pants



Featherlite Smock



Featherlite Vélo Jacket



Featherlite Vélo H2O Jacket



Lite-Speed Jacket



Pursuit Ergo Shorts



Slipstream Jacket



Sportwool Torque Jersey



Stormrider Jacket



Terra Trail Shorts



Terra T-shirt



Trail Tights



Velocity Jacket



Aero Cap



Atomic DT Pants



Bionic T-shirt



Dragonfly Shirt



Dynamo Jacket



Featherlite Marathon Jacket



Featherlite Pants



Featherlite Smock



Lite-Speed H2O Jacket



Lite-Speed Jacket



Oryx Jacket



Slipstream Jacket



Sonic Shorts



Terra T-shirt



Trail Tights

Women's Range Summary

For further information please contact MONTANE®



Aero Cap



Bionic T-shirt



Bionic Tank



Bottle Pants



Dynamo Jacket



Element Jacket



Extreme Smock



Featherlite Marathon Jacket



Featherlite Pants



Firefox Jacket



Future Fleece



Gazelle Jacket



Liberty Jacket



Lite-Speed H2O Jacket



Lite-Speed Jacket



Mayfly Shirt



Panther Jacket



Perpetual T-shirt



Quattro DT Jacket



Super-Fly Jacket



Terra Pants



Terra Stretch Pants



Terra Stretch Shorts



Venture Jacket



Venture Pants

This product is printed on stock manufactured with pulp supplied from sustainably managed forests.

Please recycle responsibly.



3 Freeman Court
North Seaton Industrial Estate
Ashington
Northumberland NE63 0YF
United Kingdom

Tel; +44 (0)1670 522 300
Fax; +44 (0)1670 522 400

Email; info@montane.co.uk
Web; www.montane.co.uk

